

WELL SUPPLIES

Section	Page
Badger Flow Meters	F-1
Pitless Adapters	F-2
Centralizers	F-3
Well Caps	F-4
Well Seals	F-5
Steel Well Plates	F-6
Water Filters	F-7
Lakos Sand Separators	F-8
Cetco Drilling Products	F-9

BADGER FLOW METERS

M5000 MAG Meter

Size	GPM Flow Range		Length	List Price
	MIN	MAX		
1/2"	0.09	27	6.7"	
3/4"	0.15	49	6.7"	
1"	0.24	77	8.9"	
1-1/4"	0.39	127	8.9"	
1-1/2"	0.4	199	8.9"	Call
2"	0.94	311	8.9"	For
2-1/2"	1.58	525	11"	Current
3"	2.39	796	11"	Pricing
4"	3.74	1244	11"	
5"	5.84	1946	15.8"	
6"	8.4	2799	15.8"	
8"	15	4976	15.8"	
10"	23.4	7775	19.7"	
12"	33.6	11196	19.7"	

- Available in sizes 0.50...24 in. (15...600 mm)
- Battery powered (10 year life)
- $\pm 0.4\%$ of measured value ± 2 mm/s accuracy independent of fluid viscosity, density and temperature
- Unaffected by most solids contained in fluids
- Pulsed DC magnetic field for zero point stability
- No pressure loss for low operational costs
- Corrosion resistant liners for long life
- Calibrated in state-of-the art facilities
- Integral and remote signal converter availability
- Optional grounding rings or grounding electrode
- Measurement largely independent of flow profile
- Low-power digital microcontroller (16 bit)
- Simple programming procedure
- Digital and infrared outputs
- Automatic zero-point stability
- Non-volatile programming
- NSF listed
- Data logging
- Available with a hard rubber liner or PTFE liner
- Available with 150-lb and 300-lb flanges



BRONZE PITLESS ADAPTERS

Model	Discharge Pipe	Drop Pipe	I.D. Casing	Working Load	List Price
1850LF	1"	1"	5" to 8"	800lbs	\$ -
1851LF	1½"	1½"	5" to 8"	2000lbs	\$ -



STAINLESS STEEL PITLESS ADAPTERS

Model	Discharge Pipe	Drop Pipe	I.D. Casing	Working Load	List Price
1850SS	1"	1"	5" to 8"	800lbs	\$ -
1851SS	1½"	1½"	5" to 8"	2000lbs	\$ -



MAASS DICKEN PITLESS ADAPTERS

Model	Discharge Pipe	Drop Pipe	I.D. Casing	Working Load	List Price
LD-S-10	1"	1"	5" to 12"	2000lbs	\$ -
LD-S-12	1½"	1½"	5" to 12"	2000lbs	\$ -
S-10	1"	1"	5" to 12"	5000lbs	\$ -
S-12	1½"	1½"	5" to 12"	5000lbs	\$ -
S-15	1½"	1½"	5" to 12"	5000lbs	\$ -
S-20	2"	2"	5" to 12"	5000lbs	\$ -



MAASS MIDWEST WELD-ON PITLESS ADAPTERS

Model	Discharge Pipe	Drop Pipe	I.D. Casing	Working Load	List Price
J41	1"	1"	4-5"	4000lbs	\$ -
4J1 ¼	1¼"	1¼"	4-5"	5000lbs	\$ -
4J1 ½	1½"	1½"	4-5"	5000lbs	\$ -
5J2	2"	2"	5"	6000lbs	\$ -
6J1	1"	1"	6-7-8"+	4000lbs	\$ -
6J1 ¼	1¼"	1¼"	6-7-8"+	5000lbs	\$ -
6J1 ½	1½"	1½"	6-7-8"+	5000lbs	\$ -
6J2	2"	2"	6-7-8"+	6000lbs	\$ -
6J2 ½	2½"	2½"	6-7-8"+	8000lbs	\$ -
8J3	3"	3"	8-10-12"+	10000lbs	\$ -
10J4	4"	4"	10-12-14"+	15000lbs	\$ -



STEEL PITLESS COLUMNS

Description	List Price
5" x 5' Blank Steel Column - Threaded on One End	\$ -
6" x 5' Blank Steel Column - Threaded on One End	\$ -



TORQUE ARRESTOR

MFG Part Number	Pipe Size	Material	Casing Size	List Price
1350	1"-1¼"	Rubber	4"- 8"	\$ -

*Supplied with 2 stainless steel clamps
*NSF Approved



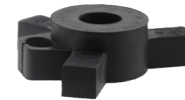
CABLE PROTECTORS

MFG Part Number	Pipe Size	Material	Casing Size	List Price
1358	1"-1¼"	Plastic	4"- 8"	\$ -



CENTERING SPIDERS

MFG Part Number	Pipe Size	Material	Casing Size	List Price
TAS46-10	1"	Rubber	4"- 6"	\$ -
TAS46-12	1¼"	Rubber	4"- 6"	\$ -
TAS46-15	1½"	Rubber	4"- 6"	\$ -
TAS46-20	2"	Rubber	4"- 6"	\$ -



KWIK-ZIP HD SERIES CENTRALIZERS

Model	Runner Height	Recommended Pipe		Carton Quantity	List Price
		Runner Height	Diameter		
HD 30	30mm / 1-3/16"	4" & Greater	30	\$ -	
HD 50	50mm / 2"	4" & Greater	30	\$ -	
HD 75	75mm / 3"	4" & Greater	30	\$ -	
HD 100	100mm / 4"	4" & Greater	30	\$ -	



Sizing Table - HD Series - Vertical

Nominal Pipe Size (NPS)	OD of Pipe (mm)	OD of Pipe (Inches)	Suggested Number of Segments	Approx Setting Guide Position
	110	4.33	2	0
4	114.30	4.50	2	15
4.5	127.00	5.00	2	30
5	141.30	5.563	2	55
	160	6.30	3	0
6	168.27	6.625	3	5
	180	7.09	3	20
	200	7.87	3	40
8	219.08	8.625	3	65
	250	9.84	4	25
10	273.05	10.75	4	45
12	323.85	12.75	4	80
14	355.60	14.00	5	50
16	406.40	16.00	6	35
18	457.20	18.00	6	65
20	508.00	20.00	7	55
24	609.60	24.00	8	65
	650	25.59	9	50
	710	27.95	9	70
	800	31.50	10	75
	900	35.43	12	60
	1000	39.37	13	65
	1100	43.30	14	70
	1200	47.24	17	45

Please refer to the relevant product series installation guide for additional information

WELL CAPS

Aluminum Well Caps

Model	Description	O.D. Casing	Conduit Fitting	List Price
CC-5	5" Aluminum Well Caps	5-9/16"	1"	\$ -
CC-6	6" Aluminum Well Caps	6-5/8"	1"	\$ -
CC-8	8" Aluminum Well Caps	8-5/8"	1"	\$ -

- Can be personalized, 50 piece minimum
- Cast aluminum alloy 319 - will not crack or warp
- Fitted for 1" conduit
- Three square head stainless steel cup point set screws
- Designed for 1/64" clearance fit to prevent foreign matter intrusion
- Model CC-ID cap 1-1/4" conduit as standard



Water Tight Aluminum Well Caps

Model	Description	O.D. Casing	Conduit Fitting	List Price
WTCC-4	4" Water Tight Aluminum Well Caps	4-1/2"	1"	\$ -
WTCC-5	5" Water Tight Aluminum Well Caps	5-9/16"	1"	\$ -
WTCC-6	6" Water Tight Aluminum Well Caps	6-5/8"	1 1/4"	\$ -
WTCC-8	8" Water Tight Aluminum Well Caps	8-5/8"	1 1/4"	\$ -

- WTCC caps Water Systems Council - PAS-2 listed
- Cast aluminum with stainless steel bolts
- WTCC models are vented to meet state codes
- Can be personalized, 50 piece minimum
- Five bolt pulldown for sure seal and tamper resistance
- Heavy Buna-N Seal prevents foreign matter intrusion
- Buna-N rubber seal is internal to cap assembly and is not exposed to outside environment



Baker Premium Water Tight Cast Iron Well Caps

Model	Description	O.D. Casing	Conduit Fitting	List Price
4W	Cast Iron Premium Water Tight Well Cap	4-1/2"	1 1/2"	\$ -
5W	Cast Iron Premium Water Tight Well Cap	5-9/16"	1 1/2"	\$ -
6W	Cast Iron Premium Water Tight Well Cap	6-5/8"	1 1/2"	\$ -
6.6W	Cast Iron Premium Water Tight Well Cap	7"	1 1/2"	\$ -
7W	Cast Iron Premium Water Tight Well Cap	7-5/8"	1 1/2"	\$ -
8W	Cast Iron Premium Water Tight Well Cap	8-5/8"	1 1/2"	\$ -
10W	Cast Iron Premium Water Tight Well Cap	10-3/4"	3"	\$ -
12W	Cast Iron Premium Water Tight Well Cap	12-3/4"	3"	\$ -

- The top of the cap can be removed without effecting the seal, conduit or wiring.
- The Premium Watertight Cap is made of high quality grey cast iron.
- Painted green and oven dried to produce a durable high quality finish.
- All our high quality hardware is plated.
- Conforms to Water System Council PAS-97 (04) Standards.
- Premium Watertight Cap can be used as a vacuum seal when conduit is plugged.



ABS Well Seals

Well Size I.D.	Drop Pipe Size	Cable Hole Tapping	Vent Tapping	List Price
5"	1"	3/4"	1/2"	\$ -
5"	1 1/4"	3/4"	1/2"	\$ -
5"	1 1/2"	3/4"	1/2"	\$ -
5"	2"	3/4"	1/2"	\$ -
6"	1"	3/4"	1/2"	\$ -
6"	1 1/4"	3/4"	1/2"	\$ -
6"	1 1/2"	3/4"	1/2"	\$ -
6"	2"	3/4"	1/2"	\$ -



- *Hi Impact ABS Material
- *Zinc plated steel bolts
- *Extra thick molded rubber packer

Steel Well Seal - Single Drop Pipe

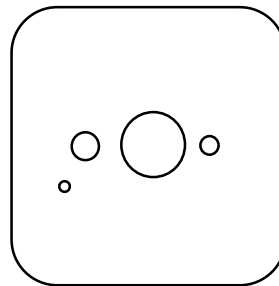
Well Size I.D.	Drop Pipe Size	Cable Hole Tapping	Vent Tapping	List Price
5"	1"	1"	1/2"	\$ -
5"	1 1/4"	1"	1/2"	\$ -
5"	1 1/2"	3/4"	1/2"	\$ -
5"	2"	3/4"	1/2"	\$ -
6"	1"	1"	1/2"	\$ -
6"	1 1/4"	1"	1/2"	\$ -
6"	1 1/2"	1"	1/2"	\$ -
6"	2"	3/4"	1/2"	\$ -
8"	1"	1"	1/2"	\$ -
8"	1 1/4"	1"	1/2"	\$ -
8"	1 1/2"	1"	1/2"	\$ -
8"	2"	1"	1/2"	\$ -
8"	2 1/2"	1"	1/2"	\$ -
8"	3"	1"	1/2"	\$ -
8"	4"	1"	1/2"	\$ -



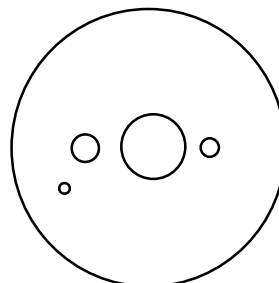
- *A36 hot roll steel
- *Galvanized steel bolts
- *3/4" molded rubber, 35 durometer
- *Powder coated polyester finish

STEEL WELL PLATES

Size	Thickness	Pipe Size	Shape	List Price
24"	3/8"	2"	Square	\$ -
24"	3/8"	2-1/2"	Square	\$ -
24"	3/8"	3"	Square	\$ -
24"	3/8"	4"	Square	\$ -
24"	1/2"	2"	Square	\$ -
24"	1/2"	2-1/2"	Square	\$ -
24"	1/2"	3"	Square	\$ -
24"	1/2"	4"	Square	\$ -
24"	1/2"	5"	Square	\$ -
24"	1/2"	6"	Square	\$ -



SIZE	Thickness	Pipe Size	Shape	List Price
16"	3/8"	2"	Round	\$ -
16"	3/8"	2-1/2"	Round	\$ -
16"	3/8"	3"	Round	\$ -
16"	3/8"	4"	Round	\$ -
16"	1/2"	2"	Round	\$ -
16"	1/2"	2-1/2"	Round	\$ -
16"	1/2"	3"	Round	\$ -
16"	1/2"	4"	Round	\$ -



Filtration

Filter Housings

Inlet/ Outlet	Sump Color	Max Pressure Rating	Dimensions Width x Length	List Price
3/4"	Clear	125 PSI	4.61" x 11.65"	\$ -
1"	Blue	125 PSI	7.38" x 13.51"	\$ -
1-1/2"	Blue	125 PSI	7.38" x 13.51"	\$ -



Sediment Filter Cartridges

Filter Type	Material	Micron	Dimensions Width x Length	List Price
Wound	Polypropylene	5	2.50" x 10"	\$ -
Wound	Polypropylene	10	2.50" x 10"	\$ -
Wound	Polypropylene	25	2.50" x 10"	\$ -
Pleated	Polyester	20	4.50" x 10"	\$ -
Pleated	Polyester	50	4.50" x 10"	\$ -



Taste & Odor Filter Cartridges

Filter Type	Material	Micron	Dimensions Width x Length	List Price
Taste & Odor	GAC	5	2.50" x 10"	\$ -
Taste & Odor	GAC	5	4.50" x 10"	\$ -



Twist II Clean Filters

Model	Max Flow Rate	Inlet/Outlet Size	Screen Mesh Size	List Price
T2C-100	39 GPM	1" Male NPT	100 Mesh / 150 Micron	\$ -
T2C-150	78 GPM	1 1/2" Male NPT	100 Mesh / 150 Micron	\$ -



Twist II Clean Repair Parts

Description	List Price
1" Twist II Clean Filter Element Kit	\$ -
1" Twist II Clean Repair Kit - O-Rings / Pin / Red Pull Tab	\$ -
1 1/2" Twist II Clean Filter Element Kit	\$ -
1 1/2" Twist II Clean Repair Kit - O-Rings / Red Pull Tab	\$ -



LAKOS SAND SEPARATORS

Sandmaster Plus (SMP) Series

Model	Flow Range U.S. gpm	Inlet/Outlet Size Male, N.P.T	Dry Weight Lbs.	List Price
SMP-05	5-10	1/2"	7	\$ -
SMP-10	10-20	3/4"	8	\$ -
SMP-20	20-32	1"	13	\$ -
SMP-30	30-48	1-1/4"	13	\$ -
SMP-45	45-70	1-1/2"	13	\$ -

*Purge pipe size for all models is 3/4"

*100psi pressure rating



ILB Series

Model	Flow Range U.S. gpm	Inlet/Outlet Size Male, N.P.T	Dry Weight Lbs.	List Price
ILB-0050	4-10	1/2"	14	\$ -
ILB-0075	10-20	3/4"	15	\$ -
ILB-0100	19-32	1"	27	\$ -
ILB-0125	28-48	1-1/4"	27	\$ -
ILB-0150	45-70	1-1/2"	27	\$ -
ILB-0200	65-108	2"	52	\$ -
ILB-0250	98-155	2-1/2"	60	\$ -
ILB-0300	148-290	3"	101	\$ -

*Purge pipe size for all models is 3/4"

*150psi pressure rating



LAKOS ACCESSORIES

Model	Description	List Price
MBCK-0510	Mounting Bracket Clamp Kit For SMP-05 thru SMP-10	\$ -
MBCK-2045	Mounting Bracket Clamp Kit For SMP-20 thru SMP-45	\$ -
MBCK-015	Mounting Bracket Clamp Kit For ILB-0050	\$ -
MBCK-022	Mounting Bracket Clamp Kit For ILB-0075	\$ -
MBCK-033	Mounting Bracket Clamp Kit For ILB-0100 thru ILB-0150	\$ -
MBCK-052	Mounting Bracket Clamp Kit For ILB-0200 thru ILB-0250	\$ -
MBCK-062	Mounting Bracket Clamp Kit For ILB-0300	\$ -
AP-75-MBV	3/4" AccuPurge Automatic Valve (110 or 220 VAC)	\$ -



Cetco Drilling Products

PREMIUM GEL® is a 200 mesh, 90 bbl yield sodium bentonite for freshwater drilling, slurry walls, and tunnel boring. PREMIUM GEL complies with API 13A Section 9, Specifications for Drilling Fluid Materials. NSF/ANSI Standard 60 Certified.



SUPER GEL-X® is an easy mixing, high viscosity 200 bbl yield freshwater drilling fluid produced from the highest grade Wyoming sodium bentonite. May be used for all types of freshwater mud rotary drilling. NSF/ANSI Standard 60 Certified.



ACCU-VIS® (PHPA, 50% Active) is a liquid copolymer designed for fast field mixing, viscosity building, and clay/shale stabilization in aqueous drilling fluids. NSF/ANSI Standard 60 Certified.



SUPER THIN™ is a highly concentrated additive engineered to reduce drilling fluid viscosity. It offers immediate thinning action, reduces gel strength, and is more cost-effective than traditional thinners. NSF/ANSI Standard 60 Certified.



INSTA-VIS™ LOW VISCOSITY is an easy-mixing, watersoluble, polymer used in horizontal and vertical drilling applications. Ideal for use in recycling systems. NSF/ANSI Standard 60 Certified.



MAGMA FIBER is a specially formulated, extrusion spun mineral fiber loss circulation material. This coarse, long, and flexible fiber will give increased circulation by bridging and plugging off voids, fractures, and all types of permeable formations.



REL-PAC® (PAC, Dry) is a non-fermenting granular polymer designed for building a low solids drilling fluid with increased borehole stability. REL-PAC is a highly dispersible polymer, that improves drilling fluid efficiency.



VERSAFOAM® PLUS is an ultra high-yielding, biodegradable, liquid foaming agent for use in fresh and saltwater air rotary drilling. Dry air rotary drilling or mixed with water for foam drilling. NSF/ANSI Standard 60 Certified.



C/S GRANULAR and CETCO CRUMBLES are granular bentonite products composed of polymer-free, dried bentonite in various mesh sizes. CETCO CRUMBLES are coarser in size than C/S GRANULAR. C/S GRANULAR and CETCO CRUMBLES are certified to NSF/ANSI Standard 60.



CETCO COATED TABLETS are coated using an aqueous carrier to apply the coating. The coating allows the tablets to reach a discrete depth within the waterwell, piezometer, monitoring well, or annular space. These untreated organic tablets are compressed into 1/4" (0.64 cm) and 3/8" (0.95 cm) sizes. CETCO COATED TABLETS are certified to NSF/ANSI Standard 60.



CETCO COARSE CHIPS are natural sodium bentonite screened to 3/8 inch (0.95 cm) to 3/4 inch (1.90 cm) in size. PUREGOLD MEDIUM CHIPS are natural sodium bentonite screened to 1/4 inch (0.64 cm) to 3/8 inch (0.95 cm) in size. CETCO COARSE CHIPS and PUREGOLD MEDIUM CHIPS are certified to NSF/ANSI Standard 60.



CETCO GROUT is a 20% solids, polymer-free, single-component, easy-to use sodium bentonite grout available in powdered form. CETCO GROUT allows placement in a low viscosity state. CETCO GROUT is certified to NSF/ANSI Standard 60.



Cetco Drilling Products

Drilling Fluids

Description	Function	Packaging	Pallet Qty	List Price
Hydraul-EZ	Drilling Fluid - HDD	50 lb Bags	48	\$ -
Premium Gel	Drilling Fluid - API 13A, Section 9	50 lb Bags	48	\$ -
Super Gel-X	Drilling Fluid - High Yield	50 lb Bags	48	\$ -

Grouts & Sealants

Description	Function	Packaging	Pallet Qty	List Price
Cetco Crumbles	Sealant - 8/20 Mesh	50 lb Bags	48	\$ -
Cetco Grout	Grout - 20% Solids	50 lb Bags	48	\$ -
Cetco Tablets	Sealant - 1/2", 1/4", 3/8"	50 lb Pails	36	\$ -
Puregold Medium Chips	Sealant - 1/4" - 3/8"	50 lb Bags	48	\$ -

Loss Circulation Material (LCM)

Description	Function	Packaging	Pallet Qty	List Price
Magma Fiber	LCM - Acid Soluble	25 lb Bags	48	\$ -

Polymers & Additives

Description	Function	Packaging	Pallet Qty	List Price
Accu-Vis	Viscosifier / Clay Inhibitor	44 lb Pails	32	\$ -
Insta-Vis Low Viscosity	Low Viscosity / Clay Inhibitor	36 lb Pails	36	\$ -
Rel-Pac	Fluid Loss Control	25 lb Pails	36	\$ -
Rel-Pac	Fluid Loss Control	50 lb Bags	40	\$ -
Super Thin	Dispersant	45 lb Pails	32	\$ -
Versafoam Plus	Drilling Foam	43 lb Pails	32	\$ -

