

PIPE & FITTINGS

Section	Page
----------------	-------------

PVC

Threaded PVC Pipe	D-1
Belled End PVC Pipe & Well Casing	D-2
Jet Stream TiteLoc PVC Casing	D-4
Sch 40 PVC Fittings	D-5
PVC Repair Couplings	D-6
Sch 80 PVC Fittings	D-8
Stainless Steel Clamps	D-9
JC Whitlam PVC Solvents	D-10
JC Whitlam Accessories	D-11
Poly Pipe & Fittings	D-12
PEX Products	D-13

Steel

Steel Drop Pipe	D-15
Black & Galvanized Steel Fittings	D-16
Black & Galvanized Nipples	D-22
Cast Iron Flanges	D-29
Flange Gaskets	D-29
Grooved Fittings	D-30
Stainless Steel Fittings	D-31
Brass Fittings	D-36
Pipe Thread Compounds	D-37

THREADED PVC DROP PIPE

Sch 80 Threaded PVC Pipe	Diameter	Length	Wall Thickness	Outside Diameter	Inside Diameter	Lift Qty (Feet)	List Price
	1"	20'	.179"	1.315"	.957"	4000	
1 ¼"	20'	.191"	1.660"	1.278"	2760		
1 ½"	20'	.200"	1.900"	1.500"	1880	Call	
2"	20'	.218"	2.375"	1.939"	2800	for	
2 ½"	20'	.276"	2.875"	2.323"	1080	Price	
3"	20'	.300"	3.500"	2.900"	920		
4"	20'	.340"	4.500"	3.820"	580		

PVC THREADED SCHEDULE 80 PIPE HORSEPOWER RATINGS - DEPTH CHART						
SIZE	MAX HP	RECOMMENDED FITTINGS	PUMPING LIMITATIONS - BASED ON SHUT-OFF SWITCH			TORQUE ARRESTOR
			40 PSI	50 PSI	60 PSI	
1"	1.5	EXTRUDED COUPLINGS	610'	590'	570'	USE OVER 150'
1 1/4"	2	EXTRUDED COUPLINGS	475'	455'	435'	USE OVER 150'
1 1/2"	5	STEEL OR BRASS COUPLINGS	435'	415'	395'	USE OVER 150'
2"	7.5	STEEL OR BRASS COUPLINGS	350'	325'	300'	USE OVER 150'

* Based off of manufacture guidelines

Sch 120 Threaded PVC Pipe	Diameter	Length	Wall Thickness	Outside Diameter	Inside Diameter	Lift Qty (Feet)	List Price
	1"	20'	.200"	1.315"	.915"	4000	
1 ¼"	20'	.215"	1.660"	1.230"	2760	Call	
1 ½"	20'	.225"	1.900"	1.450"	1880	For	
2"	20'	.250"	2.375"	1.875"	2800	Price	

PVC THREADED SCHEDULE 120 PIPE HORSEPOWER RATINGS - DEPTH CHART						
SIZE	MAX HP	RECOMMENDED FITTINGS	PUMPING LIMITATIONS - BASED ON SHUT-OFF SWITCH			TORQUE ARRESTOR
			40 PSI	50 PSI	60 PSI	
1"	1.5	EXTRUDED COUPLINGS	700'	675'	650'	USE OVER 150'
1 1/4"	2	EXTRUDED COUPLINGS	570'	545'	520'	USE OVER 150'
1 1/2"	5	STEEL OR BRASS COUPLINGS	500'	480'	455'	USE OVER 150'
2"	7.5	STEEL OR BRASS COUPLINGS	435'	415'	395'	USE OVER 150'

* Based off of manufacture guidelines

THREADED DROP PIPE COUPLINGS

Threaded Drop Pipe Couplings	Diameter	Galvanized		Black		Stainless Steel	
		Price Each	Box Qty	Price Each	Box Qty	Price Each	Box Qty
	1"	\$ -	25	\$ -	25	\$ -	10
	1 ¼"	\$ -	25	\$ -	25	\$ -	10
	1 ½"	\$ -	25	\$ -	25	\$ -	10
	2"	\$ -	25	\$ -	25	\$ -	25
	2 ½"	\$ -	20	\$ -	20		
	3"	\$ -	15	\$ -	15		
	4"	\$ -	10	\$ -	10		

Back to Pipe Index



BELLED END PVC PIPE

	Diameter	Length	Outside Diameter	Inside Diameter	Wall Thickness	Lift Qty (Feet)	List Price
SDR26 160# Belled End PVC Pipe	1 1/4"	20'	1.660"	1.532"	.064"	5620	
	1 1/2"	20'	1.900"	1.754"	.073"	4060	
	2"	20'	2.375"	2.193"	.091"	2800	
	2 1/2"	20'	2.875"	2.655"	.110"	1740	
	3"	20'	3.500"	3.230"	.135"	1200	Call
	4"	20'+	4.500"	4.154"	.173"	720	For Price
	4 1/2"	20'+	4.950"	4.570"	.190"	480	Price
	5"	20'+	5.563"	5.135"	.214"	420	
	6"	20'+	6.625"	6.115"	.255"	600	
	8"	20'+	8.625"	7.961"	.332"	360	
10"	20'+	10.750"	9.924"	.413"	220		
SDR21 200# Belled End PVC Pipe	1"	20'	1.315"	1.189"	.063"	8000	
	1 1/4"	20'	1.660"	1.502"	.079"	5620	
	1 1/2"	20'	1.900"	1.720"	.090"	4060	
	2"	20'	2.375"	2.149"	.113"	2800	
	2 1/2"	20'	2.875"	2.601"	.137"	1740	Call
	3"	20'	3.500"	3.166"	.167"	1200	For Price
	4"	20'+	4.500"	4.072"	.214"	720	Price
	5"	20'+	5.563"	5.033"	.265"	420	
	6"	20'+	6.625"	5.993"	.316"	600	
	8"	20'+	8.625"	7.805"	.410"	360	
10"	20'+	10.750"	9.728"	.511"	220		
Sch 40 Belled End PVC Pipe	1"	20'	1.315"	1.049"	.133"	4000	
	1 1/4"	20'	1.660"	1.380"	.140"	5620	
	1 1/2"	20'	1.900"	1.610"	.145"	4060	
	2"	20'	2.375"	2.067"	.154"	2800	
	2 1/2"	20'	2.875"	2.469"	.203"	1740	Call
	3"	20'	3.500"	3.068"	.216"	1200	For Price
	4"	20'+	4.500"	4.026"	.237"	720	Price
	4 1/2"	20'+	4.950"	4.454"	.248"	480	
	5"	20'+	5.563"	5.047"	.258"	420	
6"	20'+	6.625"	6.065"	.280"	600		
8"	20'+	8.625"	7.981"	.322"	360		

Back to Pipe Index

JET STREAM TWENTY+PLUS PVC WELL CASING



SLOTTED BELLED END PVC PIPE

	Diameter	Slot	Length	C-C Slot Spacing	Number of Rows	Open Area Square	Lift Qty (Feet)	List Price	
SDR 26 160# PVC Slotted Belled End Casing	4"	.035	20'+	.25	4	213	720		
	4 1/2"	.035	20'+	.25	4	246	480		
	5"	.020	20'+	.25	4	139	420		
	5"	.035	20'+	.25	4	283	420		
	6"	.035	20'+	.25	5	311	600	Call	
	8"	.035	20'+	.25	6	418	360	For	
	8"	.050	20'+	.25	6	554	360	Price	
	8"	.085	20'+	.25	6	834	360		
	10"	.085	20'+	.25	7	1040	220		
	SDR 21 200# PVC Slotted Belled End Casing	4"	.035	20'+	.25	4	120	720	
5"		.020	20'+	.25	4	134	420		
5"		.035	20'+	.25	4	269	420		
6"		.035	20'+	.25	5	290	600	Call	
8"		.035	20'+	.25	6	383	360	For	
8"		.050	20'+	.25	6	507	360	Price	
8"		.085	20'+	.25	6	763	360		
10"		.050	20'+	.25	7	642	220		
SCH 40 PVC Slotted Belled End Casing		4"	.035	20'+	.25	4	218	720	
		4 1/2"	.035	20'+	.25	4	224	480	
	5"	.020	20'+	.25	4	134	420		
	5"	.035	20'+	.25	4	269	420	Call	
	6"	.035	20'+	.25	5	311	600	For	
	8"	.035	20'+	.25	6	418	360	Price	
	8"	.050	20'+	.25	6	554	360		
	8"	.085	20'+	.25	6	834	360		

Back to Pipe Index

JET STREAM TWENTY+PLUS PVC WELL CASING



JET STREAM TITELOC PVC WELL CASING

	Diameter	Length	Outside Diamete	Inside Diamete	Wall Thicknes	Lift Qty (Feet)	List Price
SDR 21 200#	5"	20'	5.563	5.033	.265	420	<i>Call</i>
	6"	20'	6.625	5.993	.316	600	<i>For</i>
	6 1/8"	20'	6.900	6.242	.329		<i>Price</i>
SDR 17 250#	4 1/2"	20'	4.950	4.368	.291	480	<i>Call</i>
	5"	20'	5.563	4.909	.327	420	<i>For</i>
	6"	20'	6.625	5.845	.390	360	<i>Price</i>
SCH 40	4"	20'	4.500	4.026	.237	720	<i>Call</i>
	4 1/2"	20'	4.950	4.454	.248	480	<i>For</i>
	6"	20'	6.625	6.065	.280	600	<i>Price</i>

JET STREAM TITELOC PVC SLOTTED WELL CASING

	Diameter	Slot	Length	Number of Rows	Open Area	Lift Qty (Feet)	List Price
SDR 21 200#	5"	.020	20'	4	134	420	
	5"	.035	20'	4	269	420	<i>Call</i>
	6"	.020	20'	5	158	600	<i>For</i>
	6"	.035	20'	5	290	600	<i>Price</i>
SDR 17 250#	4 1/2"	.020	20'	4	122	480	
	4 1/2"	.035	20'	4	214	480	<i>Call</i>
	5"	.020	20'	4	124	420	<i>For</i>
	5"	.035	20'	4	251	420	<i>Price</i>
SCH 40	4"	.020	20'	4	435	720	
	4"	.035	20'	4	218	720	<i>Call</i>
	4 1/2"	.020	20'	4	447	480	<i>For</i>
	4 1/2"	.035	20'	4	224	480	<i>Price</i>
	6"	.035	20'	5	311	600	

Back to Pipe Index

SCH 40 PVC FITTINGS

PVC COUPLINGS - SxS

Size	Box Qty	List Price
3/4"	50	\$ -
1"	50	\$ -
1 1/4"	25	\$ -
1 1/2"	25	\$ -
2"	25	\$ -
2 1/2"	10	\$ -
3"	10	\$ -
4"	5	\$ -
5"	4	\$ -
6"	5	\$ -
8"	4	\$ -



PVC TEE - SxSxS

Size	Box Qty	List Price
3/4"	50	\$ -
1"	50	\$ -
1 1/4"	25	\$ -
1 1/2"	25	\$ -
2"	25	\$ -
2 1/2"	10	\$ -
3"	10	\$ -
4"	5	\$ -
5"	4	\$ -
6"	4	\$ -
8"	2	\$ -



PVC 90° ELBOW - SxS

Size	Box Qty	List Price
3/4"	50	\$ -
1"	50	\$ -
1 1/4"	25	\$ -
1 1/2"	25	\$ -
2"	25	\$ -
2 1/2"	10	\$ -
3"	10	\$ -
4"	5	\$ -
5"	5	\$ -
6"	4	\$ -
8"	3	\$ -



PVC 45° ELBOW - SxS

Size	Box Qty	List Price
3/4"	50	\$ -
1"	50	\$ -
1 1/4"	25	\$ -
1 1/2"	25	\$ -
2"	25	\$ -
2 1/2"	10	\$ -
3"	10	\$ -
4"	5	\$ -
5"	5	\$ -
6"	4	\$ -
8"	4	\$ -



PVC FEMALE ADAPTER

Size	Box Qty	List Price
3/4"	50	\$ -
1"	50	\$ -
1 1/4"	25	\$ -
1 1/2"	25	\$ -
2"	25	\$ -
2 1/2"	10	\$ -
3"	10	\$ -
4"	5	\$ -
5"	5	\$ -
6"	4	\$ -
8"	4	\$ -



PVC MALE ADAPTER

Size	Box Qty	List Price
3/4"	50	\$ -
1"	50	\$ -
1 1/4"	25	\$ -
1 1/2"	25	\$ -
2"	25	\$ -
2 1/2"	10	\$ -
3"	10	\$ -
4"	5	\$ -
5"	5	\$ -
6"	4	\$ -
8"	4	\$ -



Back to Pipe Index

SCH 40 PVC FITTINGS

PVC BUSHING - SxS

Size	Box Qty	List Price
3/4" X 1/2"	100	\$ -
1" x 1/2"	100	\$ -
1" x 3/4"	100	\$ -
1 1/4" x 1/2"	25	\$ -
1 1/4" x 3/4"	25	\$ -
1 1/4" x 1"	25	\$ -
1 1/2" x 1/2"	25	\$ -
1 1/2" x 3/4"	25	\$ -
1 1/2" x 1"	25	\$ -
1 1/2" x 1 1/4"	25	\$ -
2" x 1/2"	10	\$ -
2" x 3/4"	10	\$ -
2" x 1"	10	\$ -
2" x 1 1/4"	10	\$ -
2" x 1 1/2"	25	\$ -
2 1/2" x 1/2"	10	\$ -
2 1/2" x 3/4"	10	\$ -
2 1/2" x 1"	10	\$ -
2 1/2" x 1 1/4"	10	\$ -
2 1/2" x 1 1/2"	10	\$ -
2 1/2" x 2"	10	\$ -
3" x 1/2"	10	\$ -
3" x 3/4"	10	\$ -
3" x 1"	10	\$ -
3" x 1 1/4"	10	\$ -
3" x 1 1/2"	10	\$ -
3" x 2"	10	\$ -
3" x 2 1/2"	10	\$ -
4" x 1"	5	\$ -
4" x 1 1/4"	5	\$ -
4" x 1 1/2"	5	\$ -
4" x 2"	5	\$ -
4" x 2 1/2"	5	\$ -
4" x 3"	5	\$ -
5" x 3"	5	\$ -
5" x 4"	4	\$ -
6" x 2"	5	\$ -
6" x 3"	5	\$ -
6" x 4"	5	\$ -
6" x 5"	5	\$ -
8" x 2"	5	\$ -
8" x 3"	5	\$ -
8" x 4"	5	\$ -
8" x 5"	4	\$ -
8" x 6"	5	\$ -



PVC BUSHING - SxT

Size	Box Qty	List Price
3/4" X 1/2"	100	\$ -
1" x 1/2"	100	\$ -
1" x 3/4"	100	\$ -
1 1/4" x 1/2"	25	\$ -
1 1/4" x 3/4"	25	\$ -
1 1/4" x 1"	25	\$ -
1 1/2" x 1/2"	25	\$ -
1 1/2" x 3/4"	25	\$ -
1 1/2" x 1"	25	\$ -
1 1/2" x 1 1/4"	25	\$ -
2" x 1/2"	10	\$ -
2" x 3/4"	10	\$ -
2" x 1"	10	\$ -
2" x 1 1/4"	10	\$ -
2" x 1 1/2"	10	\$ -
2 1/2" x 1/2"	10	\$ -
2 1/2" x 3/4"	10	\$ -
2 1/2" x 1"	10	\$ -
2 1/2" x 1 1/4"	10	\$ -
2 1/2" x 1 1/2"	10	\$ -
2 1/2" x 2"	10	\$ -
3" x 3/4"	10	\$ -
3" x 1"	10	\$ -
3" x 1 1/4"	10	\$ -
3" x 1 1/2"	10	\$ -
3" x 2"	10	\$ -
3" x 2 1/2"	10	\$ -
4" x 2"	5	\$ -
4" x 2 1/2"	5	\$ -
4" x 3"	5	\$ -
5" x 4"	5	\$ -
6" x 2"	5	\$ -
6" x 4"	5	\$ -



PVC CROSS - SxSxSxS

Size	Box Qty	List Price
1"	50	\$ -
1 1/4"	25	\$ -
1 1/2"	25	\$ -
2"	10	\$ -
2 1/2"	8	\$ -
3"	10	\$ -
4"	5	\$ -



Back to Pipe Index

SCH 40 PVC FITTINGS

PVC CAP - SLIP

Size	Box Qty	List Price
3/4"	100	\$ -
1"	50	\$ -
1 1/4"	25	\$ -
1 1/2"	25	\$ -
2"	25	\$ -
2 1/2"	10	\$ -
3"	10	\$ -
4"	5	\$ -
5"	5	\$ -
6"	5	\$ -
8"	4	\$ -



PVC PLUG - THREADED

Size	Box Qty	List Price
3/4"	50	\$ -
1"	50	\$ -
1 1/4"	25	\$ -
1 1/2"	25	\$ -
2"	10	\$ -
2 1/2"	10	\$ -
3"	10	\$ -
4"	5	\$ -



PVC COMPRESSION COUPLING

Size	Box Qty	List Price
1"	20	\$ -
1 1/4"	10	\$ -
1 1/2"	10	\$ -
2"	10	\$ -
2 1/2"	8	\$ -
3"	5	\$ -
4"	6	\$ -



EXPANDABLE PVC REPAIR COUPLING

Size	Box Qty	List Price
1"	18	\$ -
1 1/4"	12	\$ -
1 1/2"	12	\$ -
2"	8	\$ -
2 1/2"	4	\$ -
3"	3	\$ -
4"	2	\$ -



PVC INSERT FITTINGS

PVC INSERT COUPLING

Size	Box Qty	List Price
1/2"	50	\$ -
3/4"	50	\$ -
1"	50	\$ -
1 1/4"	25	\$ -
1 1/2"	25	\$ -
2"	10	\$ -



PVC INSERT MALE ADAPTER

Size	Box Qty	List Price
1/2"	50	\$ -
3/4"	50	\$ -
1"	50	\$ -
1 1/4"	20	\$ -
1 1/2"	25	\$ -
2"	10	\$ -



Back to Pipe Index

SCH 80 PVC FITTINGS

SCH 80 PVC UNION - SxS

Size	Box Qty	List Price
1"	10	\$ -
1 1/4"	5	\$ -
1 1/2"	5	\$ -
2"	5	\$ -
3"	5	\$ -
4"	2	\$ -



SCH 80 PVC UNION - TxT

Size	Box Qty	List Price
1"	10	\$ -
1 1/4"	5	\$ -
1 1/2"	5	\$ -
2"	5	\$ -
3"	5	\$ -
4"	4	\$ -



SCH 80 PVC FEMALE ADAPTER

Size	Box Qty	List Price
1"	10	\$ -
1 1/4"	5	\$ -
1 1/2"	5	\$ -
2"	5	\$ -
3"	5	\$ -
4"	2	\$ -



SCH 80 PVC MALE ADAPTER

Size	Box Qty	List Price
1"	10	\$ -
1 1/4"	5	\$ -
1 1/2"	5	\$ -
2"	5	\$ -
3"	5	\$ -
4"	4	\$ -



SCH 80 PVC NIPPLE - TxT

Size	Box Qty	List Price
1" x Close	50	\$ -
1" x 2"	50	\$ -
1" x 4"	50	\$ -
1" x 6"	50	\$ -
1" x 8"	50	\$ -
1" x 10"	50	\$ -
1" x 12"	50	\$ -



SCH 80 PVC NIPPLE - TxT

Size	Box Qty	List Price
1 1/4" x Close	25	\$ -
1 1/4" x 2"	25	\$ -
1 1/4" x 4"	25	\$ -
1 1/4" x 6"	25	\$ -
1 1/4" x 8"	25	\$ -
1 1/4" x 10"	25	\$ -
1 1/4" x 12"	25	\$ -



SCH 80 PVC NIPPLE - TxT

Size	Box Qty	List Price
1 1/2" x Close	25	\$ -
1 1/2" x 4"	25	\$ -
1 1/2" x 6"	25	\$ -
1 1/2" x 8"	25	\$ -
1 1/2" x 10"	25	\$ -
1 1/2" x 12"	25	\$ -



SCH 80 PVC NIPPLE - TxT

Size	Box Qty	List Price
2" x Close	10	\$ -
2" x 4"	10	\$ -
2" x 6"	10	\$ -
2" x 8"	10	\$ -
2" x 10"	10	\$ -
2" x 12"	15	\$ -



Back to Pipe Index

STAINLESS STEEL CLAMPS

Mfg Number	Description	Size	Box Quantity	List Price
6308	8	7/16" x 1"	10	\$ -
6310	10	1/2" x 1-1/16"	10	\$ -
6312	12	1/2" x 1-1/4"	10	\$ -
6316	16	11/16" x 1-1/2"	10	\$ -
6320	20	3/4" x 1-3/4"	10	\$ -
6324	24	1" x 2"	10	\$ -
6328	28	1-15/16" x 2-1/2"	10	\$ -
6332	32	1-1/2" x 2-1/2"	10	\$ -
6336	36	1-3/4" x 2-3/4"	10	\$ -
6340	40	2" x 3"	10	\$ -
6352	52	2-3/4" x 3-3/4"	10	\$ -
6364	64	2-1/2" x 4-1/2"	10	\$ -
6372	72	3" x 5"	10	\$ -
6380	80	3-1/2" x 5-1/2"	10	\$ -
6396	96	4-1/2" x 6-1/2"	10	\$ -
63104	104	5" x 7"	10	\$ -
63128	128	6-1/2" x 8-1/2"	10	\$ -
63152	152	8" x 10"	10	\$ -

Back to Pipe Index



PVC Solvents

PVC Cement - J.C. Whitlam

	Item #	Size	Case Quantity	List Price
PVC Clear Med Bodied / Med Set	PL4	1/4 Pint	24	\$ -
PVC Clear Med Bodied / Med Set	PL8	1/2 Pint	24	\$ -
PVC Clear Med Bodied / Med Set	PL16	Pint	12	\$ -
PVC Clear Med Bodied / Med Set	PL32	Quart	12	\$ -
PVC Clear Med Bodied / Med Set	PL1-CGW	Gallon	6	\$ -



PVC Clear Heavy Duty / Med Set	HDP4	1/4 Pint	24	\$ -
PVC Clear Heavy Duty / Med Set	HDP8	1/2 Pint	24	\$ -
PVC Clear Heavy Duty / Med Set	HDP16	Pint	12	\$ -
PVC Clear Heavy Duty / Med Set	HDP32	Quart	12	\$ -
PVC Clear Heavy Duty / Med Set	HDP1-CGW	Gallon	6	\$ -



"Weatherproof" Blue Wet/Dry Med Body / Fast Set	WET4	1/4 Pint	24	\$ -
"Weatherproof" Blue Wet/Dry Med Body / Fast Set	WET8	1/2 Pint	24	\$ -
"Weatherproof" Blue Wet/Dry Med Body / Fast Set	WET16	Pint	12	\$ -
"Weatherproof" Blue Wet/Dry Med Body / Fast Set	WET32	Quart	12	\$ -
"Weatherproof" Blue Wet/Dry Med Body / Fast Set	WET1-CGW	Gallon	6	\$ -



PVC Gray SCH. 80 Heavy Bodied / Slow Set	PGL16	Pint	12	\$ -
PVC Gray SCH. 80 Heavy Bodied / Slow Set	PGL32	Quart	12	\$ -
PVC Gray SCH. 80 Heavy Bodied / Slow Set	PGL1-CGW	Gallon	6	\$ -



Back to Pipe Index

Average Joint Cure Schedule For WHITLAM PVC/CPVC Solvent Cements**

Relative Humidity 60% or Less	Cure Time Pipe Sizes 1/2" to 1 1/4"		Cure Time Pipe Sizes 1 1/2" to 2"		Cure Time Pipe Sizes 2 1/2" to 8"		Cure Time Pipe Sizes 10" to 15"	Cure Time Pipe Sizes 15"+
	up to 160 psi	160 to 370 psi	up to 160 psi	above 160 to 315 psi	up to 160 psi	above 160 to 315 psi	up to 100 psi	up to 100 psi
60°-100°F	15 min	6 hrs	30 min	12 hrs	1 1/2 hrs	24 hrs	48 hrs	72 hrs
40°- 60°F	20 min	12 hrs	45 min	24 hrs	4 hrs	48 hrs	96 hrs	6 days
0°- 40°F	30 min	48 hrs	1 hour	96 hrs	72 hrs	8 days	8 days	14 days

Note-Joint cure schedule is the necessary time to allow before pressurizing system. In damp or humid weather allow 50% more cure time.

** These figures are estimates based on our laboratory tests; extended cure times are required for chemical applications. Due to the many variables in the field, these figures should be used as a general guide only.

PVC Solvents

Clear PVC Primer - J.C. Whitlam

	Item #	Size	Case Quantity	List Price
Low Voc Clear Primer	PCL4	1/4 Pint	24	\$ -
Low Voc Clear Primer	PCL8	1/2 Pint	24	\$ -
Low Voc Clear Primer	PCL16	Pint	12	\$ -
Low Voc Clear Primer	PCL32	Quart	12	\$ -
Low Voc Clear Primer	PCL1-CGW	Gallon	6	\$ -



Purple PVC Primer - J.C. Whitlam

Low Voc Purple Primer	PPL4	1/4 Pint	24	\$ -
Low Voc Purple Primer	PPL8	1/2 Pint	24	\$ -
Low Voc Purple Primer	PPL16	Pint	12	\$ -
Low Voc Purple Primer	PPL32	Quart	12	\$ -
Low Voc Purple Primer	PPL1-CGW	Gallon	6	\$ -



PVC Cleaner - J.C. Whitlam

Low Voc Clear Cleaner	C4	1/4 Pint	24	\$ -
Low Voc Clear Cleaner	C8	1/2 Pint	24	\$ -
Low Voc Clear Cleaner	C16	Pint	12	\$ -
Low Voc Clear Cleaner	C32	Quart	12	\$ -
Low Voc Clear Cleaner	C1-CGW	Gallon	6	\$ -



Pipe Gasket Lube - J.C. Whitlam

Blue Lube Polymer Based	GLP16	Pint	24	\$ -
Blue Lube Polymer Based	GLP32	Quart	12	\$ -
Blue Lube Polymer Based	GLP16	Gallon	4	\$ -
Blue Lube Polymer Based	GLP5	5 Gallon		\$ -



Accessories

	Size	Case Quantity	List Price
Gallon Can Swab with Cap	12"	12	\$ -
Talon Heavy Duty Hand Cleaning Towels	9" x 12"	6	\$ -
DAP Quick Cure High Yield Polyurethane Foam	11 oz	12	\$ -



Back to Pipe Index

POLY PIPE & FITTINGS

SDR 11 Poly Pipe

Diameter	Pressure Rating	Length	List Price
1"	SDR11 / 200 PSI	500'	
1-1/4"	SDR11 / 200 PSI	500'	<i>Call</i>
1-1/2"	SDR11 / 200 PSI	500'	<i>For</i>
2"	SDR11 / 200 PSI	2000'	<i>Price</i>
3"	SDR11 / 200 PSI	1000'	
4"	SDR11 / 200 PSI	500' or 800'	



SDR11 Fusible Poly Transitions

Size	Description	Box Qty	List Price
1-1/4"	MPT X IPS DR11 COATED TRANSITION	16	\$ -
1-1/2"	MPT X IPS DR11 COATED TRANSITION	12	\$ -
2"	MPT X IPS DR11 COATED TRANSITION	16	\$ -
3"	MPT X IPS DR11 COATED TRANSITION	4	\$ -
4"	MPT X IPS DR11 COATED TRANSITION	4	\$ -



Threaded Hammer Unions

Size	Description	List Price
2"	Threaded Hammer Union / 1000 PSI	\$ -
3"	Threaded Hammer Union / 1000 PSI	\$ -
4"	Threaded Hammer Union / 1000 PSI	\$ -



Polymate Threaded Adapters

Size	Description	List Price
1"	304SS Polymate Threaded Adapter	\$ -
1-1/4"	304SS Polymate Threaded Adapter	\$ -
1-1/2"	304SS Polymate Threaded Adapter	\$ -
2"	304SS Polymate Threaded Adapter	\$ -
3"	304SS Polymate Threaded Adapter	\$ -
4"	304SS Polymate Threaded Adapter	\$ -



Back to Pipe Index

PEX TUBING

Nominal Size	OD	Wall	Calculated ID	Length	Color	List Price
3/4"	.875"	.097"	.681"	100' Coil	White	\$ -
1"	1.125"	.125"	.875"	100' Coil	White	\$ -
1 1/4"	1.375	0.153	1.069	100' Coil	White	\$ -

Back to Pipe Index

PowerPEX is available in copper tube sizes (CTS) 1/2" through 2". Coils are available up to 1". Straight lengths are available for every size. 1/2" - 1" available in red, white or blue. 1..." - 2" available in white only.

Proudly Made in America

Domestic materials. Domestic manufacture. Made in America using the best materials possible with the best people possible



1. Cut tube at 90-degrees. Do not crush OD of tubing with cutters. Hint: Slightly rotate cutter during blade engagement.



2. Install PEX Crimp Ring onto OD of tubing.



3. Install PEX fitting into tube end.



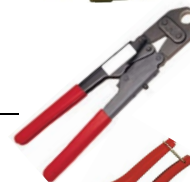
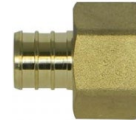
4. Position ring over sealing barbs of the fitting. The ring should be positioned approximately 1/8" to 1/4" from the end of the tube.



5. Compress tool perpendicular to tubing run. Compress only once. Remove defective connections. Use a gauge to assure a proper joint. Test completed joint.

PEX FITTINGS

Configuration	Material	Size	Box Qty	List Price
Crimp Ring	Copper	3/4"	100	\$ -
Crimp Ring	Copper	1"	100	\$ -
Female Adapter	Brass	3/4"	25	\$ -
Female Adapter	Brass	1"	15	\$ -
Female Adapter	Poly	3/4"	-	\$ -
Female Adapter	Poly	1"	25	\$ -
Male Adapter	Brass	3/4"	25	\$ -
Male Adapter	Brass	1"	15	\$ -
Male Adapter	Poly	3/4"	-	\$ -
Male Adapter	Poly	1"	25	\$ -
Reducing Male Adapter	Brass	1" PEX x 3/4" MA	15	\$ -
90 Deg Elbow	Brass	3/4"	25	\$ -
90 Deg Elbow	Brass	1"	15	\$ -
90 Deg Elbow	Poly	3/4"	-	\$ -
90 Deg Elbow	Poly	1"	10	\$ -
Coupling	Brass	3/4"	25	\$ -
Coupling	Brass	1"	15	\$ -
Coupling	Poly	3/4"	-	\$ -
Coupling	Poly	1"	25	\$ -
Tee	Brass	3/4"	25	\$ -
Tee	Brass	1"	15	\$ -
Tee	Poly	3/4"	-	\$ -
Tee	Poly	1"	10	\$ -
PEX x PEX Ball Valve	Brass	3/4"	10	\$ -
PEX x PEX Ball Valve	Brass	1"	6	\$ -
1" PEX Crimping Tool				\$ -
3/8" - 1 1/4" Ratcheting Tube Cutter				\$ -
PEX Go/No-Go Gauge 3/8", 1/2", 3/4" & 1"				\$ -



Back to Pipe Index

STEEL PIPE


	Diameter	Length	Outside Diameter	Inside Diameter	Wall Thickness	Lift Qty (Feet)	Weight Per Foot	List Price
Black T&C Steel Drop Pipe	1/2"	21'	.840"	.622"	.109"	2520	0.85	
	3/4"	21'	1.050"	.824"	.113"	1764	1.13	
	1"	21'	1.315"	1.049"	.133"	1260	1.68	
	1 1/4"	21'	1.660"	1.380"	.140"	882	2.27	
	1 1/2"	21'	1.900"	1.610"	.145"	756	2.72	Call
	2"	21'	2.375"	2.067"	.154"	546	3.65	For
	2 1/2"	21'	2.875"	2.469"	.203"	378	5.79	Price
	3"	21'	3.500"	3.068"	.216"	294	7.58	
	4"	21'	4.500"	4.026"	.237"	210	10.79	
	5"	21'	5.563"	5.047"	.258"	147	14.61	
	6"	21'	6.625"	6.065"	.280"	147	18.97	

	Diameter	Length	Outside Diameter	Inside Diameter	Wall Thickness	Lift Qty (Feet)	Weight Per Foot	List Price
Galvanized T&C Steel Drop Pipe	1/2"	21'	.840"	.622"	.109"	2520	0.85	
	3/4"	21'	1.050"	.824"	.113"	1764	1.13	
	1"	21'	1.315"	1.049"	.133"	1260	1.68	
	1 1/4"	21'	1.660"	1.380"	.140"	882	2.27	
	1 1/2"	21'	1.900"	1.610"	.145"	756	2.72	Call
	2"	21'	2.375"	2.067"	.154"	546	3.65	For
	2 1/2"	21'	2.875"	2.469"	.203"	378	5.79	Price
	3"	21'	3.500"	3.068"	.216"	294	7.58	
	4"	21'	4.500"	4.026"	.237"	210	10.79	
	5"	21'	5.563"	5.047"	.258"	147	14.61	
	6"	21'	6.625"	6.065"	.280"	147	18.97	

Back to Pipe Index


90° Elbows - Class 150

Black			Galvanized		
Size	Box Qty	List Price	Size	Box Qty	List Price
1/8"	50	\$ -	1/8"	50	\$ -
1/4"	35	\$ -	1/4"	35	\$ -
3/8"	90	\$ -	3/8"	90	\$ -
1/2"	50	\$ -	1/2"	50	\$ -
3/4"	35	\$ -	3/4"	35	\$ -
1"	20	\$ -	1"	20	\$ -
1 1/4"	20	\$ -	1 1/4"	20	\$ -
1 1/2"	10	\$ -	1 1/2"	15	\$ -
2"	8	\$ -	2"	8	\$ -
2 1/2"	12	\$ -	2 1/2"	12	\$ -
3"	8	\$ -	3"	8	\$ -
4"	2	\$ -	4"	2	\$ -
5"	2	\$ -	5"	-	\$ -
6"	-	\$ -	6"	-	\$ -



90° Street Elbows - Class 150

Black			Galvanized		
Size	Box Qty	List Price	Size	Box Qty	List Price
1/8"	60	\$ -	1/8"	60	\$ -
1/4"	35	\$ -	1/4"	35	\$ -
3/8"	40	\$ -	3/8"	40	\$ -
1/2"	60	\$ -	1/2"	60	\$ -
3/4"	35	\$ -	3/4"	35	\$ -
1"	45	\$ -	1"	45	\$ -
1 1/4"	25	\$ -	1 1/4"	25	\$ -
1 1/2"	9	\$ -	1 1/2"	9	\$ -
2"	8	\$ -	2"	8	\$ -
2 1/2"	5	\$ -	2 1/2"	5	\$ -
3"	8	\$ -	3"	8	\$ -
4"	4	\$ -	4"	4	\$ -
6"	-	\$ -	6"	-	\$ -



Back to Pipe Index

45° Elbows - Class 150

Black		
Size	Box Qty	List Price
1/8"	50	\$ -
1/4"	30	\$ -
3/8"	50	\$ -
1/2"	50	\$ -
3/4"	40	\$ -
1"	20	\$ -
1 1/4"	20	\$ -
1 1/2"	10	\$ -
2"	12	\$ -
2 1/2"	12	\$ -
3"	10	\$ -
4"	4	\$ -
5"	-	\$ -
6"	-	\$ -



Galvanized		
Size	Box Qty	List Price
1/8"	50	\$ -
1/4"	35	\$ -
3/8"	60	\$ -
1/2"	50	\$ -
3/4"	40	\$ -
1"	20	\$ -
1 1/4"	20	\$ -
1 1/2"	10	\$ -
2"	12	\$ -
2 1/2"	12	\$ -
3"	10	\$ -
4"	4	\$ -
5"	-	\$ -
6"	-	\$ -

Tee - Class 150

Black		
Size	Box Qty	List Price
1/8"	80	\$ -
1/4"	50	\$ -
3/8"	30	\$ -
1/2"	40	\$ -
3/4"	35	\$ -
1"	20	\$ -
1 1/4"	14	\$ -
1 1/2"	12	\$ -
2"	8	\$ -
2 1/2"	8	\$ -
3"	6	\$ -
4"	2	\$ -
5"	-	\$ -
6"	-	\$ -




Galvanized		
Size	Box Qty	List Price
1/8"	120	\$ -
1/4"	50	\$ -
3/8"	30	\$ -
1/2"	40	\$ -
3/4"	35	\$ -
1"	20	\$ -
1 1/4"	14	\$ -
1 1/2"	12	\$ -
2"	8	\$ -
2 1/2"	8	\$ -
3"	6	\$ -
4"	2	\$ -
5"	-	\$ -
6"	-	\$ -

Back to Pipe Index


Reducing Tee - Class 150

Black				Galvanized		
Size	Box Qty	List Price		Size	Box Qty	List Price
1 1/4" x 3/4"	20	\$ -	1 1/4" x 3/4"	20	\$ -	
1 1/4" x 1"	20	\$ -	1 1/4" x 1"	20	\$ -	

Cross - Class 150

Black				Galvanized		
Size	Box Qty	List Price		Size	Box Qty	List Price
1/4"	40	\$ -	1/4"	40	\$ -	
3/8"	50	\$ -	3/8"	50	\$ -	
1/2"	30	\$ -	1/2"	30	\$ -	
3/4"	20	\$ -	3/4"	20	\$ -	
1"	15	\$ -	1"	15	\$ -	
1 1/4"	10	\$ -	1 1/4"	10	\$ -	
1 1/2"	8	\$ -	1 1/2"	8	\$ -	
2"	5	\$ -	2"	5	\$ -	
2 1/2"	6	\$ -	2 1/2"	3	\$ -	
3"	4	\$ -	3"	2	\$ -	
4"	2	\$ -	4"	2	\$ -	

Square Head Plug - Class 150

Black				Galvanized		
Size	Box Qty	List Price		Size	Box Qty	List Price
1/8"	100	\$ -	1/8"	100	\$ -	
1/4"	100	\$ -	1/4"	100	\$ -	
3/8"	100	\$ -	3/8"	100	\$ -	
1/2"	100	\$ -	1/2"	100	\$ -	
3/4"	30	\$ -	3/4"	30	\$ -	
1"	20	\$ -	1"	20	\$ -	
1 1/4"	40	\$ -	1 1/4"	40	\$ -	
1 1/2"	30	\$ -	1 1/2"	30	\$ -	
2"	20	\$ -	2"	20	\$ -	
2 1/2"	16	\$ -	2 1/2"	16	\$ -	
3"	16	\$ -	3"	16	\$ -	
4"	12	\$ -	4"	6	\$ -	
5"	10	\$ -	5"	-	\$ -	
6"	10	\$ -	6"	5	\$ -	

Back to Pipe Index

Cap - Class 150

Black		
Size	Box Qty	List Price
1/8"	120	\$ -
1/4"	80	\$ -
3/8"	60	\$ -
1/2"	75	\$ -
3/4"	40	\$ -
1"	25	\$ -
1 1/4"	20	\$ -
1 1/2"	18	\$ -
2"	12	\$ -
2 1/2"	20	\$ -
3"	24	\$ -
4"	12	\$ -
5"	10	\$ -
6"	4	\$ -



Galvanized		
Size	Box Qty	List Price
1/8"	100	\$ -
1/4"	100	\$ -
3/8"	60	\$ -
1/2"	75	\$ -
3/4"	40	\$ -
1"	25	\$ -
1 1/4"	20	\$ -
1 1/2"	18	\$ -
2"	12	\$ -
2 1/2"	20	\$ -
3"	24	\$ -
4"	12	\$ -
5"	10	\$ -
6"	4	\$ -

Union - Class 150

Black		
Size	Box Qty	List Price
1/8"	30	\$ -
1/4"	20	\$ -
3/8"	20	\$ -
1/2"	50	\$ -
3/4"	35	\$ -
1"	20	\$ -
1 1/4"	15	\$ -
1 1/2"	10	\$ -
2"	12	\$ -
2 1/2"	8	\$ -
3"	8	\$ -
4"	4	\$ -



Galvanized		
Size	Box Qty	List Price
1/8"	30	\$ -
1/4"	20	\$ -
3/8"	20	\$ -
1/2"	50	\$ -
3/4"	35	\$ -
1"	20	\$ -
1 1/4"	15	\$ -
1 1/2"	10	\$ -
2"	12	\$ -
2 1/2"	8	\$ -
3"	8	\$ -
4"	4	\$ -

Back to Pipe Index

Reducer Couplings - Class 150

Black			Galvanized		
Size	Box Qty	List Price	Size	Box Qty	List Price
3/4" x 1/2"	60	\$ -	3/4" x 1/2"	60	\$ -
1" x 1/2"	30	\$ -	1" x 1/2"	30	\$ -
1" x 3/4"	25	\$ -	1" x 3/4"	25	\$ -
1 1/4" x 1"	15	\$ -	1 1/4" x 1"	15	\$ -
1 1/2" x 1"	25	\$ -	1 1/2" x 1"	25	\$ -
1 1/2" x 1 1/4"	12	\$ -	1 1/2" x 1 1/4"	12	\$ -
2" x 1"	12	\$ -	2" x 1"	12	\$ -
2" x 1 1/4"	9	\$ -	2" x 1 1/4"	9	\$ -
2" x 1 1/2"	9	\$ -	2" x 1 1/2"	9	\$ -
2 1/2" x 2"	7	\$ -	2 1/2" x 2"	7	\$ -
3" x 2"	6	\$ -	3" x 2"	6	\$ -
3" x 2 1/2"	5	\$ -	3" x 2 1/2"	5	\$ -
4" x 2"	3	\$ -	4" x 2"	3	\$ -
4" x 2 1/2"	3	\$ -	4" x 2 1/2"	3	\$ -
4" x 3"	3	\$ -	4" x 3"	3	\$ -
5" x 4"	-	\$ -	5" x 4"	-	\$ -
6" x 4"	2	\$ -	6" x 4"	2	\$ -
6" x 5"	2	\$ -	6" x 5"	-	\$ -



Merchant Couplings - Sch 40

Black			Galvanized		
Size	Box Qty	List Price	Size	Box Qty	List Price
1/8"	100	\$ -	1/8"	100	\$ -
1/4"	100	\$ -	1/4"	100	\$ -
3/8"	100	\$ -	3/8"	100	\$ -
1/2"	100	\$ -	1/2"	100	\$ -
3/4"	50	\$ -	3/4"	50	\$ -
1"	30	\$ -	1"	30	\$ -
1 1/4"	25	\$ -	1 1/4"	25	\$ -
1 1/2"	25	\$ -	1 1/2"	25	\$ -
2"	20	\$ -	2"	20	\$ -
2 1/2"	24	\$ -	2 1/2"	24	\$ -
3"	18	\$ -	3"	18	\$ -
4"	12	\$ -	4"	12	\$ -
5"	6	\$ -	5"	6	\$ -
6"	4	\$ -	6"	4	\$ -



Back to Pipe Index

Hex Bushings - Class 150

Black			Galvanized		
Size	Box Qty	List Price	Size	Box Qty	List Price
1/4" x 1/8"	100	\$ -	1/4" x 1/8"	100	\$ -
3/8" x 1/8"	100	\$ -	3/8" x 1/8"	100	\$ -
3/8" x 1/4"	100	\$ -	3/8" x 1/4"	100	\$ -
1/2" x 1/4"	100	\$ -	1/2" x 1/4"	100	\$ -
1/2" x 3/8"	100	\$ -	1/2" x 3/8"	100	\$ -
3/4" x 1/4"	75	\$ -	3/4" x 1/4"	75	\$ -
3/4" x 3/8"	75	\$ -	3/4" x 3/8"	75	\$ -
3/4" x 1/2"	75	\$ -	3/4" x 1/2"	75	\$ -
1" x 1/4"	50	\$ -	1" x 1/4"	50	\$ -
1" x 3/8"	50	\$ -	1" x 3/8"	50	\$ -
1" x 1/2"	50	\$ -	1" x 1/2"	50	\$ -
1" x 3/4"	50	\$ -	1" x 3/4"	50	\$ -
1 1/4" x 1/4"	30	\$ -	1 1/4" x 1/4"	30	\$ -
1 1/4" x 3/4"	30	\$ -	1 1/4" x 3/4"	30	\$ -
1 1/4" x 1"	30	\$ -	1 1/4" x 1"	30	\$ -
1 1/2" x 3/4"	25	\$ -	1 1/2" x 3/4"	25	\$ -
1 1/2" x 1"	25	\$ -	1 1/2" x 1"	25	\$ -
1 1/2" x 1 1/4"	25	\$ -	1 1/2" x 1 1/4"	25	\$ -
2" x 1/4"	20	\$ -	2" x 1/4"	20	\$ -
2" x 3/4"	20	\$ -	2" x 3/4"	20	\$ -
2" x 1"	20	\$ -	2" x 1"	20	\$ -
2" x 1 1/4"	20	\$ -	2" x 1 1/4"	20	\$ -
2" x 1 1/2"	20	\$ -	2" x 1 1/2"	20	\$ -
2 1/2" x 1"	15	\$ -	2 1/2" x 1"	15	\$ -
2 1/2" x 1 1/4"	15	\$ -	2 1/2" x 1 1/4"	15	\$ -
2 1/2" x 1 1/2"	15	\$ -	2 1/2" x 1 1/2"	15	\$ -
2 1/2" x 2"	15	\$ -	2 1/2" x 2"	15	\$ -
3" x 1"	12	\$ -	3" x 1"	12	\$ -
3" x 1 1/4"	12	\$ -	3" x 1 1/4"	12	\$ -
3" x 1 1/2"	12	\$ -	3" x 1 1/2"	12	\$ -
3" x 2"	12	\$ -	3" x 2"	12	\$ -
3" x 2 1/2"	12	\$ -	3" x 2 1/2"	12	\$ -
4" x 2"	5	\$ -	4" x 2"	5	\$ -
4" x 2 1/2"	5	\$ -	4" x 2 1/2"	5	\$ -
4" x 3"	5	\$ -	4" x 3"	5	\$ -
5" x 3"	2	\$ -	5" x 3"	2	\$ -
5" x 4"	2	\$ -	5" x 4"	2	\$ -
6" x 4"	2	\$ -	6" x 4"	2	\$ -
6" x 5"	2	\$ -	6" x 5"	2	\$ -



Back to Pipe Index

Steel Pipe Nipples - Sch 40

Black			Galvanized		
Size	Box Qty	List Price	Size	Box Qty	List Price
1/8" x Close	25	\$ -	1/8" x Close	25	\$ -
1/8" x 1 1/2"	25	\$ -	1/8" x 1 1/2"	25	\$ -
1/8" x 2"	25	\$ -	1/8" x 2"	25	\$ -
1/8" x 2 1/2"	25	\$ -	1/8" x 2 1/2"	25	\$ -
1/8" x 3"	25	\$ -	1/8" x 3"	25	\$ -
1/8" x 3 1/2"	25	\$ -	1/8" x 3 1/2"	25	\$ -
1/8" x 4"	25	\$ -	1/8" x 4"	25	\$ -
1/8" x 4 1/2"	25	\$ -	1/8" x 4 1/2"	25	\$ -
1/8" x 5"	25	\$ -	1/8" x 5"	25	\$ -
1/8" x 5 1/2"	25	\$ -	1/8" x 5 1/2"	25	\$ -
1/8" x 6"	25	\$ -	1/8" x 6"	25	\$ -
1/8" x 7"	25	\$ -	1/8" x 7"	25	\$ -
1/8" x 8"	25	\$ -	1/8" x 8"	25	\$ -
1/8" x 9"	25	\$ -	1/8" x 9"	25	\$ -
1/8" x 10"	25	\$ -	1/8" x 10"	25	\$ -
1/8" x 11"	25	\$ -	1/8" x 11"	25	\$ -
1/8" x 12"	25	\$ -	1/8" x 12"	25	\$ -



Black			Galvanized		
Size	Box Qty	List Price	Size	Box Qty	List Price
1/4" x Close	25	\$ -	1/4" x Close	25	\$ -
1/4" x 1 1/2"	25	\$ -	1/4" x 1 1/2"	25	\$ -
1/4" x 2"	25	\$ -	1/4" x 2"	25	\$ -
1/4" x 2 1/2"	25	\$ -	1/4" x 2 1/2"	25	\$ -
1/4" x 3"	25	\$ -	1/4" x 3"	25	\$ -
1/4" x 3 1/2"	25	\$ -	1/4" x 3 1/2"	25	\$ -
1/4" x 4"	25	\$ -	1/4" x 4"	25	\$ -
1/4" x 4 1/2"	25	\$ -	1/4" x 4 1/2"	25	\$ -
1/4" x 5"	25	\$ -	1/4" x 5"	25	\$ -
1/4" x 5 1/2"	25	\$ -	1/4" x 5 1/2"	25	\$ -
1/4" x 6"	25	\$ -	1/4" x 6"	25	\$ -
1/4" x 7"	25	\$ -	1/4" x 7"	25	\$ -
1/4" x 8"	25	\$ -	1/4" x 8"	25	\$ -
1/4" x 9"	25	\$ -	1/4" x 9"	25	\$ -
1/4" x 10"	25	\$ -	1/4" x 10"	25	\$ -
1/4" x 11"	25	\$ -	1/4" x 11"	25	\$ -
1/4" x 12"	25	\$ -	1/4" x 12"	25	\$ -



Back to Pipe Index

Steel Pipe Nipples - Sch 40

Black			Galvanized		
Size	Box Qty	List Price	Size	Box Qty	List Price
3/8" x Close	25	\$ -	3/8" x Close	25	\$ -
3/8" x 1 1/2"	25	\$ -	3/8" x 1 1/2"	25	\$ -
3/8" x 2"	25	\$ -	3/8" x 2"	25	\$ -
3/8" x 2 1/2"	25	\$ -	3/8" x 2 1/2"	25	\$ -
3/8" x 3"	25	\$ -	3/8" x 3"	25	\$ -
3/8" x 3 1/2"	25	\$ -	3/8" x 3 1/2"	25	\$ -
3/8" x 4"	25	\$ -	3/8" x 4"	25	\$ -
3/8" x 4 1/2"	25	\$ -	3/8" x 4 1/2"	25	\$ -
3/8" x 5"	25	\$ -	3/8" x 5"	25	\$ -
3/8" x 5 1/2"	25	\$ -	3/8" x 5 1/2"	25	\$ -
3/8" x 6"	25	\$ -	3/8" x 6"	25	\$ -
3/8" x 7"	25	\$ -	3/8" x 7"	25	\$ -
3/8" x 8"	25	\$ -	3/8" x 8"	25	\$ -
3/8" x 9"	25	\$ -	3/8" x 9"	25	\$ -
3/8" x 10"	25	\$ -	3/8" x 10"	25	\$ -
3/8" x 11"	25	\$ -	3/8" x 11"	25	\$ -
3/8" x 12"	25	\$ -	3/8" x 12"	25	\$ -



Black			Galvanized		
Size	Box Qty	List Price	Size	Box Qty	List Price
1/2" x Close	25	\$ -	1/2" x Close	25	\$ -
1/2" x 1 1/2"	25	\$ -	1/2" x 1 1/2"	25	\$ -
1/2" x 2"	25	\$ -	1/2" x 2"	25	\$ -
1/2" x 2 1/2"	25	\$ -	1/2" x 2 1/2"	25	\$ -
1/2" x 3"	25	\$ -	1/2" x 3"	25	\$ -
1/2" x 3 1/2"	25	\$ -	1/2" x 3 1/2"	25	\$ -
1/2" x 4"	25	\$ -	1/2" x 4"	25	\$ -
1/2" x 4 1/2"	25	\$ -	1/2" x 4 1/2"	25	\$ -
1/2" x 5"	25	\$ -	1/2" x 5"	25	\$ -
1/2" x 5 1/2"	25	\$ -	1/2" x 5 1/2"	25	\$ -
1/2" x 6"	25	\$ -	1/2" x 6"	25	\$ -
1/2" x 7"	25	\$ -	1/2" x 7"	25	\$ -
1/2" x 8"	25	\$ -	1/2" x 8"	25	\$ -
1/2" x 9"	25	\$ -	1/2" x 9"	25	\$ -
1/2" x 10"	25	\$ -	1/2" x 10"	25	\$ -
1/2" x 11"	25	\$ -	1/2" x 11"	25	\$ -
1/2" x 12"	25	\$ -	1/2" x 12"	25	\$ -



Back to Pipe Index

Steel Pipe Nipples - Sch 40

Black		
Size	Box Qty	List Price
3/4" x Close	25	\$ -
3/4" x 1 1/2"	25	\$ -
3/4" x 2"	25	\$ -
3/4" x 2 1/2"	25	\$ -
3/4" x 3"	25	\$ -
3/4" x 3 1/2"	25	\$ -
3/4" x 4"	25	\$ -
3/4" x 4 1/2"	25	\$ -
3/4" x 5"	25	\$ -
3/4" x 5 1/2"	25	\$ -
3/4" x 6"	25	\$ -
3/4" x 7"	25	\$ -
3/4" x 8"	25	\$ -
3/4" x 9"	25	\$ -
3/4" x 10"	25	\$ -
3/4" x 11"	25	\$ -
3/4" x 12"	25	\$ -



Galvanized		
Size	Box Qty	List Price
3/4" x Close	25	\$ -
3/4" x 1 1/2"	25	\$ -
3/4" x 2"	25	\$ -
3/4" x 2 1/2"	25	\$ -
3/4" x 3"	25	\$ -
3/4" x 3 1/2"	25	\$ -
3/4" x 4"	25	\$ -
3/4" x 4 1/2"	25	\$ -
3/4" x 5"	25	\$ -
3/4" x 5 1/2"	25	\$ -
3/4" x 6"	25	\$ -
3/4" x 7"	25	\$ -
3/4" x 8"	25	\$ -
3/4" x 9"	25	\$ -
3/4" x 10"	25	\$ -
3/4" x 11"	25	\$ -
3/4" x 12"	25	\$ -

Black		
Size	Box Qty	List Price
1" x Close	25	\$ -
1" x 2"	25	\$ -
1" x 2 1/2"	25	\$ -
1" x 3"	25	\$ -
1" x 3 1/2"	25	\$ -
1" x 4"	25	\$ -
1" x 4 1/2"	25	\$ -
1" x 5"	25	\$ -
1" x 5 1/2"	25	\$ -
1" x 6"	25	\$ -
1" x 7"	25	\$ -
1" x 8"	25	\$ -
1" x 9"	25	\$ -
1" x 10"	25	\$ -
1" x 11"	25	\$ -
1" x 12"	25	\$ -



Galvanized		
Size	Box Qty	List Price
1" x Close	25	\$ -
1" x 2"	25	\$ -
1" x 2 1/2"	25	\$ -
1" x 3"	25	\$ -
1" x 3 1/2"	25	\$ -
1" x 4"	25	\$ -
1" x 4 1/2"	25	\$ -
1" x 5"	25	\$ -
1" x 5 1/2"	25	\$ -
1" x 6"	25	\$ -
1" x 7"	25	\$ -
1" x 8"	25	\$ -
1" x 9"	25	\$ -
1" x 10"	25	\$ -
1" x 11"	25	\$ -
1" x 12"	25	\$ -

Back to Pipe Index

Steel Pipe Nipples - Sch 40

Black		
Size	Box Qty	List Price
11/4" x Close	5	\$ -
11/4" x 2"	5	\$ -
11/4" x 2 1/2"	5	\$ -
11/4" x 3"	5	\$ -
11/4" x 3 1/2"	5	\$ -
11/4" x 4"	5	\$ -
11/4" x 4 1/2"	5	\$ -
11/4" x 5"	5	\$ -
11/4" x 5 1/2"	5	\$ -
11/4" x 6"	5	\$ -
11/4" x 7"	5	\$ -
11/4" x 8"	5	\$ -
11/4" x 9"	5	\$ -
11/4" x 10"	5	\$ -
11/4" x 11"	5	\$ -
11/4" x 12"	5	\$ -



Galvanized		
Size	Box Qty	List Price
11/4" x Close	5	\$ -
11/4" x 2"	5	\$ -
11/4" x 2 1/2"	5	\$ -
11/4" x 3"	5	\$ -
11/4" x 3 1/2"	5	\$ -
11/4" x 4"	5	\$ -
11/4" x 4 1/2"	5	\$ -
11/4" x 5"	5	\$ -
11/4" x 5 1/2"	5	\$ -
11/4" x 6"	5	\$ -
11/4" x 7"	5	\$ -
11/4" x 8"	5	\$ -
11/4" x 9"	5	\$ -
11/4" x 10"	5	\$ -
11/4" x 11"	5	\$ -
11/4" x 12"	5	\$ -

Black		
Size	Box Qty	List Price
11/2" x Close	5	\$ -
11/2" x 2"	5	\$ -
11/2" x 2 1/2"	5	\$ -
11/2" x 3"	5	\$ -
11/2" x 3 1/2"	5	\$ -
11/2" x 4"	5	\$ -
11/2" x 4 1/2"	5	\$ -
11/2" x 5"	5	\$ -
11/2" x 5 1/2"	5	\$ -
11/2" x 6"	5	\$ -
11/2" x 7"	5	\$ -
11/2" x 8"	5	\$ -
11/2" x 9"	5	\$ -
11/2" x 10"	5	\$ -
11/2" x 11"	5	\$ -
11/2" x 12"	5	\$ -



Galvanized		
Size	Box Qty	List Price
11/2" x Close	5	\$ -
11/2" x 2"	5	\$ -
11/2" x 2 1/2"	5	\$ -
11/2" x 3"	5	\$ -
11/2" x 3 1/2"	5	\$ -
11/2" x 4"	5	\$ -
11/2" x 4 1/2"	5	\$ -
11/2" x 5"	5	\$ -
11/2" x 5 1/2"	5	\$ -
11/2" x 6"	5	\$ -
11/2" x 7"	5	\$ -
11/2" x 8"	5	\$ -
11/2" x 9"	5	\$ -
11/2" x 10"	5	\$ -
11/2" x 11"	5	\$ -
11/2" x 12"	5	\$ -

Back to Pipe Index

Steel Pipe Nipples - Sch 40

Black			Galvanized		
Size	Box Qty	List Price	Size	Box Qty	List Price
2" x Close	5	\$ -	2" x Close	5	\$ -
2" x 2 1/2"	5	\$ -	2" x 2 1/2"	5	\$ -
2" x 3"	5	\$ -	2" x 3"	5	\$ -
2" x 3 1/2"	5	\$ -	2" x 3 1/2"	5	\$ -
2" x 4"	5	\$ -	2" x 4"	5	\$ -
2" x 4 1/2"	5	\$ -	2" x 4 1/2"	5	\$ -
2" x 5"	5	\$ -	2" x 5"	5	\$ -
2" x 5 1/2"	5	\$ -	2" x 5 1/2"	5	\$ -
2" x 6"	5	\$ -	2" x 6"	5	\$ -
2" x 7"	5	\$ -	2" x 7"	5	\$ -
2" x 8"	5	\$ -	2" x 8"	5	\$ -
2" x 9"	5	\$ -	2" x 9"	5	\$ -
2" x 10"	5	\$ -	2" x 10"	5	\$ -
2" x 11"	5	\$ -	2" x 11"	5	\$ -
2" x 12"	5	\$ -	2" x 12"	5	\$ -
2" x 24"	-	\$ -	2" x 24"	-	\$ -
2" x 36"	-	\$ -	2" x 36"	-	\$ -
2" x 48"	-	\$ -	2" x 48"	-	\$ -
2" x 60"	-	\$ -	2" x 60"	-	\$ -
2" x 72"	-	\$ -	2" x 72"	-	\$ -



Black			Galvanized		
Size	Box Qty	List Price	Size	Box Qty	List Price
2 1/2" x Close	5	\$ -	2 1/2" x Close	5	\$ -
2 1/2" x 3"	5	\$ -	2 1/2" x 3"	5	\$ -
2 1/2" x 3 1/2"	5	\$ -	2 1/2" x 3 1/2"	5	\$ -
2 1/2" x 4"	5	\$ -	2 1/2" x 4"	5	\$ -
2 1/2" x 4 1/2"	5	\$ -	2 1/2" x 4 1/2"	5	\$ -
2 1/2" x 5"	5	\$ -	2 1/2" x 5"	5	\$ -
2 1/2" x 5 1/2"	5	\$ -	2 1/2" x 5 1/2"	5	\$ -
2 1/2" x 6"	5	\$ -	2 1/2" x 6"	5	\$ -
2 1/2" x 7"	5	\$ -	2 1/2" x 7"	5	\$ -
2 1/2" x 8"	5	\$ -	2 1/2" x 8"	5	\$ -
2 1/2" x 9"	5	\$ -	2 1/2" x 9"	5	\$ -
2 1/2" x 10"	5	\$ -	2 1/2" x 10"	5	\$ -
2 1/2" x 11"	5	\$ -	2 1/2" x 11"	5	\$ -
2 1/2" x 12"	5	\$ -	2 1/2" x 12"	5	\$ -
2 1/2" x 24"	-	\$ -	2 1/2" x 24"	-	\$ -
2 1/2" x 36"	-	\$ -	2 1/2" x 36"	-	\$ -
2 1/2" x 48"	-	\$ -	2 1/2" x 48"	-	\$ -



Back to Pipe Index

Steel Pipe Nipples - Sch 40

Black		
Size	Box Qty	List Price
3" x Close	5	\$ -
3" x 3"	-	\$ -
3" x 3 1/2"	5	\$ -
3" x 4"	5	\$ -
3" x 4 1/2"	5	\$ -
3" x 5"	5	\$ -
3" x 5 1/2"	5	\$ -
3" x 6"	5	\$ -
3" x 7"	5	\$ -
3" x 8"	5	\$ -
3" x 9"	5	\$ -
3" x 10"	5	\$ -
3" x 11"	-	\$ -
3" x 12"	-	\$ -
3" x 24"	-	\$ -
3" x 36"	-	\$ -
3" x 48"	-	\$ -
3" x 60"	-	\$ -
3" x 72"	-	\$ -



Galvanized		
Size	Box Qty	List Price
3" x Close	5	\$ -
3" x 3"	5	\$ -
3" x 3 1/2"	5	\$ -
3" x 4"	5	\$ -
3" x 4 1/2"	5	\$ -
3" x 5"	5	\$ -
3" x 5 1/2"	5	\$ -
3" x 6"	5	\$ -
3" x 7"	5	\$ -
3" x 8"	5	\$ -
3" x 9"	5	\$ -
3" x 10"	5	\$ -
3" x 11"	5	\$ -
3" x 12"	5	\$ -
3" x 24"	-	\$ -
3" x 36"	-	\$ -
3" x 48"	-	\$ -
3" x 60"	-	\$ -
3" x 72"	-	\$ -

Black		
Size	Box Qty	List Price
4" x Close	5	\$ -
4" x 4"	5	\$ -
4" x 4 1/2"	5	\$ -
4" x 5"	5	\$ -
4" x 5 1/2"	5	\$ -
4" x 6"	5	\$ -
4" x 7"	5	\$ -
4" x 8"	5	\$ -
4" x 9"	5	\$ -
4" x 10"	5	\$ -
4" x 11"	5	\$ -
4" x 12"	5	\$ -
4" x 24"	-	\$ -
4" x 36"	-	\$ -
4" x 48"	-	\$ -
4" x 60"	-	\$ -
4" x 72"	-	\$ -



Galvanized		
Size	Box Qty	List Price
4" x Close	5	\$ -
4" x 4"	5	\$ -
4" x 4 1/2"	5	\$ -
4" x 5"	5	\$ -
4" x 5 1/2"	5	\$ -
4" x 6"	5	\$ -
4" x 7"	5	\$ -
4" x 8"	5	\$ -
4" x 9"	5	\$ -
4" x 10"	5	\$ -
4" x 11"	5	\$ -
4" x 12"	5	\$ -
4" x 24"	-	\$ -
4" x 36"	-	\$ -
4" x 48"	-	\$ -
4" x 60"	-	\$ -
4" x 72"	-	\$ -

Back to Pipe Index

Steel Pipe Nipples - Sch 40

Black		
Size	Box Qty	List Price
5" x Close	10	\$ -
5" x 4"	6	\$ -
5" x 5"	4	\$ -
5" x 6"	4	\$ -
5" x 8"	3	\$ -
5" x 10"	3	\$ -
5" x 11"	-	\$ -
5" x 12"	-	\$ -



Galvanized		
Size	Box Qty	List Price
5" x Close	10	\$ -
5" x 4"	6	\$ -
5" x 5"	-	\$ -
5" x 6"	4	\$ -
5" x 8"	3	\$ -
5" x 10"	-	\$ -
5" x 11"	-	\$ -
5" x 12"	3	\$ -

Black		
Size	Box Qty	List Price
6" x Close	9	\$ -
6" x 4"	6	\$ -
6" x 5"	4	\$ -
6" x 6"	4	\$ -
6" x 7"	2	\$ -
6" x 8"	2	\$ -
6" x 9"	2	\$ -
6" x 10"	2	\$ -
6" x 12"	2	\$ -

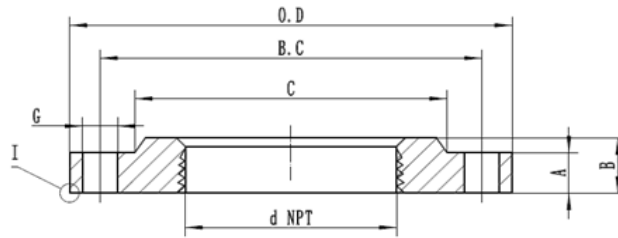


Galvanized		
Size	Box Qty	List Price
6" x Close	9	\$ -
6" x 4"	6	\$ -
6" x 5"	-	\$ -
6" x 6"	4	\$ -
6" x 7"	2	\$ -
6" x 8"	2	\$ -
6" x 9"	-	\$ -
6" x 10"	2	\$ -
6" x 12"	2	\$ -

Back to Pipe Index

125# CAST IRON THREADED COMPANION FLANGES

Size (NPT)	OD	Hole Count	Bolt Hole Diameter	A (Min)	B	C	B.C	List Price
1-1/2"	5"	4	0.62"	0.56"	0.9"	2.56"	3.88"	\$ -
2"	6"	4	0.75"	0.62"	1.0"	3.06"	4.75"	\$ -
2-1/2"	7"	4	0.75"	0.69"	1.1"	3.56"	5.50"	\$ -
3"	7-1/2"	4	0.75"	0.75"	1.2"	4.25"	6.00"	\$ -
4"	9"	8	0.75"	0.94"	1.3"	5.31"	7.50"	\$ -
5"	10"	8	0.88"	0.94"	1.4"	6.44"	8.50"	\$ -
6"	11"	8	0.88"	1.00"	1.6"	7.56"	9.50"	\$ -
8"	13-1/2"	8	0.88"	1.12"	1.8"	9.69"	11.80"	\$ -
10"	16"	12	1.00"	1.19"	1.9"	11.90"	14.30"	\$ -
12"	19"	12	1.00"	1.25"	2.2"	14.10"	17.00"	\$ -



FULL FACE FLANGE GASKET

Non-Asbestos (Green)

Red Rubber

Size	Hole Count	List Price
1-1/2" x 5"	4	\$ -
2" x 6"	4	\$ -
2-1/2" x 7"	4	\$ -
3" x 7-1/2"	4	\$ -
4" x 9"	8	\$ -
5" x 10"	8	\$ -
6" x 11"	8	\$ -
8" x 13-1/2"	8	\$ -
10" x 16"	12	\$ -
12" x 19"	12	\$ -

Size	Hole Count	List Price
1-1/2" x 5"	4	\$ -
2" x 6"	4	\$ -
2-1/2" x 7"	4	\$ -
3" x 7-1/2"	4	\$ -
4" x 9"	8	\$ -
5" x 10"	8	\$ -
6" x 11"	8	\$ -
8" x 13-1/2"	8	\$ -
10" x 16"	12	\$ -
12" x 19"	12	\$ -

Back to Pipe Index

GROOVED FITTINGS

MPN	DESCRIPTION	LIST
Sch. 40 Groove X Groove Nipples		
K570200-4.0	2" X 4" Groove X Groove Black Steel Nipple	\$ -
K570300-4.0	3" X 4" Groove X Groove Black Steel Nipple	\$ -
K570400-6.0	4" X 6" Groove X Groove Black Steel Nipple	\$ -
K570600-12.C	6" X 12" Groove X Groove Black Steel Nipple	\$ -
K570800-12.C	8" X 12" Groove X Groove Black Steel Nipple	\$ -
K571000-12.C	10" X 12" Groove X Groove Black Steel Nipple	\$ -
K571200-12.0	12" X 12" Groove X Groove Black Steel Nipple	\$ -

Sch. 40 Groove X Thread Nipples		
K590200-4.0	2" X 4" Groove X Thread Black Steel Nipple	\$ -
K590300-4.0	3" X 4" Groove X Thread Black Steel Nipple	\$ -
K590400-6.0	4" X 6" Groove X Thread Black Steel Nipple	\$ -

Grooved Pipe Flex Coupling		
K050200PE	2" Grooved Pipe Flex Coupling	\$ -
K050300PE	3" Grooved Pipe Flex Coupling	\$ -
K050400PE	4" Grooved Pipe Flex Coupling	\$ -
K050600PE	6" Grooved Pipe Flex Coupling	\$ -
K050800PE	8" Grooved Pipe Flex Coupling	\$ -
K051000PE	10" Grooved Pipe Flex Coupling	\$ -
K051200PE	12" Grooved Pipe Flex Coupling	\$ -

Back to Pipe Index



STAINLESS STEEL FITTINGS

SS 90° ELBOW

Size	Box Qty	List Price
1/4"	100	\$ -
3/8"	50	\$ -
1/2"	30	\$ -
3/4"	18	\$ -
1"	10	\$ -
1 1/4"	16	\$ -
1 1/2"	12	\$ -
2"	8	\$ -
2 1/2"	6	\$ -
3"	3	\$ -
4"	2	\$ -



SS 90° STREET ELBOW

Size	Box Qty	List Price
1/4"	100	\$ -
3/8"	50	\$ -
1/2"	32	\$ -
3/4"	12	\$ -
1"	8	\$ -
1 1/4"	16	\$ -
1 1/2"	4	\$ -
2"	8	\$ -
2 1/2"	4	\$ -
3"	3	\$ -
4"	2	\$ -



SS 45° ELBOW

Size	Box Qty	List Price
1/4"	100	\$ -
3/8"	60	\$ -
1/2"	30	\$ -
3/4"	20	\$ -
1"	8	\$ -
1 1/4"	6	\$ -
1 1/2"	12	\$ -
2"	8	\$ -
2 1/2"	6	\$ -
3"	4	\$ -
4"	2	\$ -



SS TEE

Size	Box Qty	List Price
1/4"	70	\$ -
3/8"	40	\$ -
1/2"	15	\$ -
3/4"	12	\$ -
1"	24	\$ -
1 1/4"	20	\$ -
1 1/2"	12	\$ -
2"	9	\$ -
2 1/2"	5	\$ -
3"	2	\$ -
4"	-	\$ -



SS SQUARE HEAD PLUG

Size	Box Qty	List Price
1/4"	350	\$ -
3/8"	250	\$ -
1/2"	100	\$ -
3/4"	60	\$ -
1"	36	\$ -
1 1/4"	28	\$ -
1 1/2"	24	\$ -
2"	36	\$ -
2 1/2"	20	\$ -
3"	12	\$ -
4"	10	\$ -



SS CAP

Size	Box Qty	List Price
1/4"	150	\$ -
3/8"	80	\$ -
1/2"	60	\$ -
3/4"	40	\$ -
1"	18	\$ -
1 1/4"	12	\$ -
1 1/2"	9	\$ -
2"	16	\$ -
2 1/2"	15	\$ -
3"	12	\$ -
4"	4	\$ -



Back to Pipe Index

STAINLESS STEEL FITTINGS

SS BUSHING

Size	Box Qty	List Price
1/4" x 1/8"	300	\$ -
3/8" x 1/4"	120	\$ -
1/2" x 1/4"	100	\$ -
1/2" x 3/8"	100	\$ -
3/4" x 1/4"	60	\$ -
3/4" x 3/8"	60	\$ -
3/4" x 1/2"	60	\$ -
1" x 1/4"	36	\$ -
1" x 3/8"	36	\$ -
1" x 1/2"	36	\$ -
1" x 3/4"	36	\$ -
1 1/4" x 1/2"	18	\$ -
1 1/4" x 3/4"	18	\$ -
1 1/4" x 1"	18	\$ -
1 1/2" x 1/2"	18	\$ -
1 1/2" x 3/4"	18	\$ -
1 1/2" x 1"	18	\$ -
1 1/2" x 1 1/4"	18	\$ -
2" x 1/2"	9	\$ -
2" x 3/4"	9	\$ -
2" x 1"	9	\$ -
2" x 1 1/4"	9	\$ -
2" x 1 1/2"	9	\$ -
2 1/2" x 1"	16	\$ -
2 1/2" x 1 1/4"	16	\$ -
2 1/2" x 1 1/2"	16	\$ -
2 1/2" x 2"	16	\$ -
3" x 1"	12	\$ -
3" x 1 1/2"	12	\$ -
3" x 2"	12	\$ -
3" x 2 1/2"	12	\$ -
4" x 1 1/2"	4	\$ -
4" x 2"	4	\$ -
4" x 3"	4	\$ -



SS REDUCER COUPLING

Size	Box Qty	List Price
1/4" x 1/8"	150	\$ -
3/8" x 1/4"	60	\$ -
1/2" x 1/4"	40	\$ -
1/2" x 3/8"	40	\$ -
3/4" x 1/4"	24	\$ -
3/4" x 3/8"	24	\$ -
3/4" x 1/2"	24	\$ -
1" x 1/4"	12	\$ -
1" x 3/8"	12	\$ -
1" x 1/2"	12	\$ -
1" x 3/4"	12	\$ -
1 1/4" x 1/2"	12	\$ -
1 1/4" x 3/4"	12	\$ -
1 1/4" x 1"	12	\$ -
1 1/2" x 1/2"	8	\$ -
1 1/2" x 3/4"	8	\$ -
1 1/2" x 1"	8	\$ -
1 1/2" x 1 1/4"	8	\$ -
2" x 1/2"	16	\$ -
2" x 3/4"	16	\$ -
2" x 1"	16	\$ -
2" x 1 1/4"	16	\$ -
2" x 1 1/2"	16	\$ -
2 1/2" x 1"	-	\$ -
2 1/2" x 1 1/4"	-	\$ -
2 1/2" x 1 1/2"	16	\$ -
2 1/2" x 2"	9	\$ -
3" x 1"	9	\$ -
3" x 1 1/2"	9	\$ -
3" x 2"	9	\$ -
3" x 2 1/2"	-	\$ -
4" x 1 1/2"	-	\$ -
4" x 2"	3	\$ -
4" x 3"	3	\$ -



Back to Pipe Index

STAINLESS STEEL FITTINGS

SS UNION

Size	Box Qty	List Price
1/4"	45	\$ -
3/8"	24	\$ -
1/2"	16	\$ -
3/4"	12	\$ -
1"	8	\$ -
1 1/4"	16	\$ -
1 1/2"	8	\$ -
2"	8	\$ -
2 1/2"	8	\$ -
3"	4	\$ -
4"	2	\$ -



SS MERCHANT COUPLING

Size	Box Qty	List Price
1/4"	120	\$ -
3/8"	100	\$ -
1/2"	60	\$ -
3/4"	30	\$ -
1"	16	\$ -
1 1/4"	12	\$ -
1 1/2"	12	\$ -
2"	16	\$ -
2 1/2"	8	\$ -
3"	6	\$ -
4"	3	\$ -



SS DROP PIPE COUPLING

Size	Box Qty	List Price
1"	10	\$ -
1 1/4"	10	\$ -
1 1/2"	10	\$ -
2"	5	\$ -



S INSERT MALE ADAPTE

Size	Box Qty	List Price
3/4"	20	\$ -
1"	20	\$ -
1 1/4"	20	\$ -
1 1/2"	10	\$ -
2"	5	\$ -



1/8" SS NIPPLE

Size	Box Qty	List Price
1/8" x Close	25	\$ -
1/8" x 1 1/2"	25	\$ -
1/8" x 2"	25	\$ -
1/8" x 2 1/2"	25	\$ -
1/8" x 3"	25	\$ -
1/8" x 3 1/2"	25	\$ -
1/8" x 4"	25	\$ -
1/8" x 4 1/2"	25	\$ -
1/8" x 5"	25	\$ -
1/8" x 5 1/2"	25	\$ -
1/8" x 6"	25	\$ -
1/8" x 8"	25	\$ -
1/8" x 10"	25	\$ -
1/8" x 12"	25	\$ -



1/4" SS NIPPLE

Size	Box Qty	List Price
1/4" x Close	25	\$ -
1/4" x 1 1/2"	25	\$ -
1/4" x 2"	25	\$ -
1/4" x 2 1/2"	25	\$ -
1/4" x 3"	25	\$ -
1/4" x 3 1/2"	25	\$ -
1/4" x 4"	25	\$ -
1/4" x 4 1/2"	25	\$ -
1/4" x 5"	25	\$ -
1/4" x 5 1/2"	25	\$ -
1/4" x 6"	25	\$ -
1/4" x 8"	25	\$ -
1/4" x 10"	25	\$ -
1/4" x 12"	25	\$ -



Back to Pipe Index

STAINLESS STEEL FITTINGS

3/8" SS NIPPLE

Size	Box Qty	List Price
3/8" x Close	25	\$ -
3/8" x 1 1/2"	25	\$ -
3/8" x 2"	25	\$ -
3/8" x 2 1/2"	25	\$ -
3/8" x 3"	25	\$ -
3/8" x 3 1/2"	25	\$ -
3/8" x 4"	25	\$ -
3/8" x 4 1/2"	25	\$ -
3/8" x 5"	25	\$ -
3/8" x 5 1/2"	25	\$ -
3/8" x 6"	25	\$ -
3/8" x 7"	-	\$ -
3/8" x 8"	25	\$ -
3/8" x 9"	-	\$ -
3/8" x 10"	25	\$ -
3/8" x 11"	-	\$ -
3/8" x 12"	25	\$ -



1/2" SS NIPPLE

Size	Box Qty	List Price
1/2" x Close	25	\$ -
1/2" x 1 1/2"	25	\$ -
1/2" x 2"	25	\$ -
1/2" x 2 1/2"	25	\$ -
1/2" x 3"	25	\$ -
1/2" x 3 1/2"	25	\$ -
1/2" x 4"	25	\$ -
1/2" x 4 1/2"	25	\$ -
1/2" x 5"	25	\$ -
1/2" x 5 1/2"	25	\$ -
1/2" x 6"	25	\$ -
1/2" x 7"	25	\$ -
1/2" x 8"	25	\$ -
1/2" x 9"	25	\$ -
1/2" x 10"	25	\$ -
1/2" x 11"	25	\$ -
1/2" x 12"	25	\$ -



3/4" SS NIPPLE

Size	Box Qty	List Price
3/4" x Close	25	\$ -
3/4" x 1 1/2"	25	\$ -
3/4" x 2"	25	\$ -
3/4" x 2 1/2"	25	\$ -
3/4" x 3"	25	\$ -
3/4" x 3 1/2"	25	\$ -
3/4" x 4"	25	\$ -
3/4" x 4 1/2"	25	\$ -
3/4" x 5"	25	\$ -
3/4" x 5 1/2"	25	\$ -
3/4" x 6"	25	\$ -
3/4" x 7"	25	\$ -
3/4" x 8"	25	\$ -
3/4" x 9"	25	\$ -
3/4" x 10"	25	\$ -
3/4" x 11"	25	\$ -
3/4" x 12"	25	\$ -



1" SS NIPPLE

Size	Box Qty	List Price
1" x Close	25	\$ -
1" x 1 1/2"	-	\$ -
1" x 2"	25	\$ -
1" x 2 1/2"	25	\$ -
1" x 3"	25	\$ -
1" x 3 1/2"	25	\$ -
1" x 4"	25	\$ -
1" x 4 1/2"	25	\$ -
1" x 5"	25	\$ -
1" x 5 1/2"	25	\$ -
1" x 6"	25	\$ -
1" x 7"	10	\$ -
1" x 8"	10	\$ -
1" x 9"	10	\$ -
1" x 10"	10	\$ -
1" x 11"	10	\$ -
1" x 12"	10	\$ -



Back to Pipe Index

STAINLESS STEEL FITTINGS

1 1/4" SS NIPPLE

Size	Box Qty	List Price
1 1/4" x Close	5	\$ -
1 1/4" x 2"	5	\$ -
1 1/4" x 2 1/2"	5	\$ -
1 1/4" x 3"	5	\$ -
1 1/4" x 3 1/2"	5	\$ -
1 1/4" x 4"	5	\$ -
1 1/4" x 4 1/2"	5	\$ -
1 1/4" x 5"	5	\$ -
1 1/4" x 5 1/2"	5	\$ -
1 1/4" x 6"	5	\$ -
1 1/4" x 7"	5	\$ -
1 1/4" x 8"	5	\$ -
1 1/4" x 9"	5	\$ -
1 1/4" x 10"	5	\$ -
1 1/4" x 11"	5	\$ -
1 1/4" x 12"	5	\$ -



1 1/2" SS NIPPLE

Size	Box Qty	List Price
1 1/2" x Close	5	\$ -
1 1/2" x 2"	5	\$ -
1 1/2" x 2 1/2"	5	\$ -
1 1/2" x 3"	5	\$ -
1 1/2" x 3 1/2"	5	\$ -
1 1/2" x 4"	5	\$ -
1 1/2" x 4 1/2"	5	\$ -
1 1/2" x 5"	5	\$ -
1 1/2" x 5 1/2"	5	\$ -
1 1/2" x 6"	5	\$ -
1 1/2" x 7"	5	\$ -
1 1/2" x 8"	5	\$ -
1 1/2" x 9"	5	\$ -
1 1/2" x 10"	5	\$ -
1 1/2" x 11"	5	\$ -
1 1/2" x 12"	5	\$ -



2" SS NIPPLE

Size	Box Qty	List Price
2" x Close	5	\$ -
2" x 2 1/2"	5	\$ -
2" x 3"	5	\$ -
2" x 3 1/2"	5	\$ -
2" x 4"	5	\$ -
2" x 4 1/2"	5	\$ -
2" x 5"	5	\$ -
2" x 5 1/2"	5	\$ -
2" x 6"	5	\$ -
2" x 7"	5	\$ -
2" x 8"	5	\$ -
2" x 9"	5	\$ -
2" x 10"	5	\$ -
2" x 11"	5	\$ -
2" x 12"	5	\$ -



2 1/2" SS NIPPLE

Size	Box Qty	List Price
2 1/2" x Close	35	\$ -
2 1/2" x 2 1/2"	-	\$ -
2 1/2" x 3"	35	\$ -
2 1/2" x 3 1/2"	25	\$ -
2 1/2" x 4"	25	\$ -
2 1/2" x 4 1/2"	25	\$ -
2 1/2" x 5"	20	\$ -
2 1/2" x 5 1/2"	20	\$ -
2 1/2" x 6"	20	\$ -
2 1/2" x 7"	-	\$ -
2 1/2" x 8"	15	\$ -
2 1/2" x 9"	-	\$ -
2 1/2" x 10"	10	\$ -
2 1/2" x 11"	-	\$ -
2 1/2" x 12"	10	\$ -



Back to Pipe Index

STAINLESS STEEL FITTINGS

3" SS NIPPLE

Size	Box Qty	List Price
3" x Close	25	\$ -
3" x 3"	25	\$ -
3" x 3 1/2"	20	\$ -
3" x 4"	20	\$ -
3" x 4 1/2"	15	\$ -
3" x 5"	15	\$ -
3" x 5 1/2"	15	\$ -
3" x 6"	15	\$ -
3" x 8"	10	\$ -
3" x 10"	10	\$ -
3" x 12"	10	\$ -



4" SS NIPPLE

Size	Box Qty	List Price
4" x Close	15	\$ -
4" x 3"	-	\$ -
4" x 3 1/2"	-	\$ -
4" x 4"	15	\$ -
4" x 4 1/2"	10	\$ -
4" x 5"	10	\$ -
4" x 5 1/2"	-	\$ -
4" x 6"	10	\$ -
4" x 8"	5	\$ -
4" x 10"	5	\$ -
4" x 12"	5	\$ -



BRASS FITTINGS

BRASS 90° ELBOW

Size	Box Qty	List Price
1/4"	35	\$ -
3/4"	35	\$ -
1"	20	\$ -
1 1/4"	20	\$ -
2"	8	\$ -



BRASS 90° STREET ELBOW

Size	Box Qty	List Price
1/4"	35	\$ -
3/4"	35	\$ -
1"	45	\$ -
1 1/4"	25	\$ -
2"	8	\$ -



BRASS TEE

Size	Box Qty	List Price
1/4"	75	\$ -
3/4"	35	\$ -
1"	20	\$ -
1 1/4"	14	\$ -
2"	8	\$ -



1/4" BRASS NIPPLE

Size	Box Qty	List Price
1/4" X CLOSE	25	\$ -
1/4" X 3"	25	\$ -
1/4" X 4"	25	\$ -
1/4" X 6"	25	\$ -
1/4" X 8"	25	\$ -



1" BRASS NIPPLE

Size	Box Qty	List Price
1" X CLOSE	25	\$ -
1" X 4"	25	\$ -
1" X 6"	25	\$ -
1" X 8"	10	\$ -
1" X 12"	10	\$ -



1 1/4" BRASS NIPPLE

Size	Box Qty	List Price
1 1/4" X CLOSE	5	\$ -
1 1/4" X 4"	5	\$ -
1 1/4" X 6"	5	\$ -
1 1/4" X 8"	5	\$ -
1 1/4" X 12"	5	\$ -



Back to Pipe Index

PIPE THREAD COMPOUND

Product Description	Size	List Price
Talon PTFE Thread Compound	1/4 Pint	\$ -
Talon PTFE Thread Compound	Pint	\$ -
Talon PTFE Thread Compound	Quart	\$ -



TALON PTFE Pipe Thread Compound is a triple lubricating, all-purpose, non-seizing, industrial grade thread sealing compound that provides **Freedom from Leaks™** on all types of metal and plastic threaded connections (except ABS).*

Blue Magic Thread Compound	1/4 Pint	\$ -
Blue Magic Thread Compound	1/2 Pint	\$ -
Blue Magic Thread Compound	Pint	\$ -
Blue Magic Thread Compound	Quart	\$ -



BLUE MAGIC is an All Purpose, Non-seizing, Industrial Grade Pipe Thread Compound that produces a leakproof seal on all types of metal and plastic threaded connections. Suitable for ABS, PVC, and CPVC threaded connections. MADE IN THE U.S.A.

- Non-Separating
- Grit Free Paste
- Adheres to Oily Threads
- Non Combustible
- Safe for PVC & CPVC
- Nontoxic
- Superior Anti-Galling Properties
- Excellent for Stainless Connections

Product Description	Size	List Price
Stinger HDD White Non-Metalic	1 Gallon	\$ -
Stinger HDD White Non-Metalic	2 Gallon	\$ -
Stinger HDD White Non-Metalic	5 Gallon	\$ -
Stinger Water Well Copper Based	1 Gallon	\$ -
Stinger Water Well Copper Based	3.5 Gallon	\$ -
Stinger Water Well Copper Based	5 Gallon	\$ -
ZN-18	2 Gallon	\$ -
ZN-18	5 Gallon	\$ -



Taper Dope Brush	\$ -
Beveled Dope Brush	\$ -
Mustache Brush	\$ -



Back to Pipe Index



*Applies Like Honey.
Works Like a Bee.*